

SECOND EDITION



# Best Practice in Labour and Delivery

Edited by Sir Sabaratnam Arulkumaran

CAMBRIDGE

Medicine

# Best Practice in Labour and Delivery

---

Second Edition

Cambridge University Press  
978-1-107-47234-1 — Best Practice in Labour and Delivery  
Edited by Sir Sabaratnam Arulkumaran  
Frontmatter  
[More Information](#)

---

# Best Practice in Labour and Delivery

---

Second Edition

Edited by

**Sir Sabaratnam Arulkumaran**

St George's University of London, UK, University of Nicosia, Cyprus, and Institute of Global Health, Imperial College, London, UK

**CAMBRIDGE**  
UNIVERSITY PRESS

University Printing House, Cambridge CB2 8BS, United Kingdom

Cambridge University Press is part of the University of Cambridge.

It furthers the University's mission by disseminating knowledge in the pursuit of education, learning and research at the highest international levels of excellence.

[www.cambridge.org](http://www.cambridge.org)

Information on this title: [www.cambridge.org/9781107472341](http://www.cambridge.org/9781107472341)

© Cambridge University Press 2016

This publication is in copyright. Subject to statutory exception and to the provisions of relevant collective licensing agreements, no reproduction of any part may take place without the written permission of Cambridge University Press.

First published 2009

Second edition 2016

Printed in the United Kingdom by TJ International Ltd. Padstow Cornwall

*A catalogue record for this publication is available from the British Library*

*Library of Congress Cataloguing in Publication data*

Names: Arulkumaran, Sabaratnam, editor.

Title: Best practice in labour and delivery / edited by Sir Sabaratnam Arulkumaran.

Description: Second edition. | Cambridge, United Kingdom ; New York :

Cambridge University Press, 2016. | Includes bibliographical references and index.

Identifiers: LCCN 2016041235 | ISBN 9781107472341 (paperback)

Subjects: | MESH: Labor, Obstetric | Delivery, Obstetric—methods |

Birth Injuries—prevention & control | Obstetric Labor Complications—prevention & control

Classification: LCC RG651 | NLM WQ 300 | DDC 618.4 – dc23

LC record available at <https://lcn.loc.gov/2016041235>

ISBN 978-1-107-47234-1 Paperback

Cambridge University Press has no responsibility for the persistence or accuracy of URLs for external or third-party internet websites referred to in this publication, and does not guarantee that any content on such websites is, or will remain, accurate or appropriate.

Additional resources for the this publication at [www.cambridge.org/9781107472341](http://www.cambridge.org/9781107472341)

.....  
Every effort has been made in preparing this book to provide accurate and up-to-date information which is in accord with accepted standards and practice at the time of publication. Although case histories are drawn from actual cases, every effort has been made to disguise the identities of the individuals involved. Nevertheless, the authors, editors and publishers can make no warranties that the information contained herein is totally free from error, not least because clinical standards are constantly changing through research and regulation. The authors, editors and publishers therefore disclaim all liability for direct or consequential damages resulting from the use of material contained in this book. Readers are strongly advised to pay careful attention to information provided by the manufacturer of any drugs or equipment that they plan to use.

Cambridge University Press  
978-1-107-47234-1 — Best Practice in Labour and Delivery  
Edited by Sir Sabaratnam Arulkumaran  
Frontmatter  
[More Information](#)

---

I dedicate this book to mothers, babies, their families and care givers who have helped us to understand the process of labour and delivery. The advanced scientific knowledge gained from studying labour and delivery has helped us to improve the safety and quality of the care we provide.

## Contents

*List of Contributors* page ix  
*Preface to the Second Edition* xii  
*Preface to the First Edition* xiii  
*Acknowledgements* xiv

1	<b>Pelvic and Fetal Cranial Anatomy and the Stages and Mechanism of Labour</b>	1	11	<b>Breech and Twin Delivery</b>	128
	K. Muhunthan			Stephen Walkinshaw	
2	<b>The First Stage of Labour</b>	14	12	<b>Cord Prolapse and Shoulder Dystocia</b>	144
	Daisy Nirmal and David Fraser			Joanna F. Crofts	
3	<b>Analgesia and Anaesthesia in Labour</b>	28	13	<b>Antepartum Haemorrhage</b>	157
	Mark Porter			Neelam Potdar, Osric Navti and Justin C. Konje	
4	<b>Intrapartum Fetal Monitoring</b>	40	14	<b>Management of the Third Stage of Labour</b>	170
	Savvas Argyridis and Sabaratnam Arulkumaran			Hajeb Kamali and Pina Amin	
5	<b>Uterine Contractions</b>	60	15	<b>Postpartum Haemorrhage</b>	180
	Christofides Agathoklis and Sabaratnam Arulkumaran			Anushuya Devi Kasi and Edwin Chandraharan	
6	<b>The Management of Intrapartum ‘Fetal Distress’</b>	74	16	<b>Management of Morbidly Adherent Placenta</b>	191
	Laura Coleman and Bryony Strachan			Rosemary Townsend and Edwin Chandraharan	
7	<b>Nutrition and Hydration in Labour</b>	84	17	<b>Acute Illness and Maternal Collapse in the Postpartum Period</b>	200
	David Fraser and Jonathon Francis			Jessica Hoyle, Guy Jackson and Steve Yentis	
8	<b>Prolonged Second Stage of Labour Including Difficult Decision Making on Operative Vaginal Delivery and Caesarean Section</b>	93	18	<b>Episiotomy and Obstetric Perineal Trauma</b>	212
	Deirdre J. Murphy			Ranee Thakar and Abdul H. Sultan	
9	<b>Instrumental Vaginal Deliveries: Indications, Techniques and Complications</b>	104	19	<b>Induction of Labour</b>	226
	Gabriel Kalakoutis, Stergios Doumouchtsis and Sabaratnam Arulkumaran			Vikram Sinai Talaulikar and Sabaratnam Arulkumaran	
10	<b>Caesarean Deliveries: Indications, Techniques and Complications</b>	120	20	<b>Preterm Prelabour Rupture of Membranes (pPROM)</b>	242
	Gerard H. A. Visser			Austin Ugwumadu	
			21	<b>The Management of Preterm Labour</b>	250
				Jan Stener Jørgensen and Ronald F. Lamont	

---

Contents

- |  |   |
|--|---|
| <p>22 <b>Labour in Women with Medical Disorders</b> 264<br/>Mandish K. Dhanjal and Catherine Nelson-Piercy</p> <p>23 <b>Management of Women with Previous Caesarean Section</b> 280<br/>Tsz Kin Lo and Tak Yeung Leung</p> <p>24 <b>Rupture of the Uterus</b> 293<br/>Ana Pinas Carrillo and Edwin Chandraharan</p> <p>25 <b>Management of Severe Pre-Eclampsia/Eclampsia</b> 301<br/>James J. Walker</p> <p>26 <b>Neonatal Resuscitation and the Management of Immediate Neonatal Problems</b> 312<br/>Paul Mannix</p> <p>27 <b>The Immediate Puerperium</b> 325<br/>Shankari Arulkumaran</p> <p>28 <b>Triage and Prioritization in a Busy Labour Ward</b> 335<br/>Nina Johns</p> | <p>29 <b>Risk Management in Intrapartum Care</b> 346<br/>Leroy C. Edozien</p> <p>30 <b>Team Working, Skills and Drills on the Labour Ward</b> 360<br/>Katie Cornthwaite and Dimitrios M. Siassakos</p> <p>31 <b>Cerebral Palsy Arising from Events in Labour</b> 370<br/>Mariana Rei and Diogo Ayres-de-Campos</p> <p>32 <b>Objective Structured Assessment of Technical Skills (OSATS) in Obstetrics</b> 379<br/>Melissa Whitten</p> <p>33 <b>Non-Technical Skills to Improve Obstetric Practice</b> 389<br/>Kim Hinshaw</p> |
|--|---|
- 
- Index* 401
- Colour plates are to be found between pages 202 and 203*

## Contributors

### **Christofides Agathoklis**

Head of Obstetrics and Gynaecology, Archbishop Makarios Hospital, Nicosia, Cyprus

### **Pina Amin, MBBS, FRCOG, MRCPI**

Consultant Obstetrician and Gynaecologist, University Hospital of Wales, Cardiff

### **Savvas Argyridis**

Associate Professor, University of Nicosia, Cyprus

### **Sabaratnam Arulkumaran, MD, PhD, FRCS, FRCOG**

Emeritus Professor of Obstetrics and Gynaecology, St George's University of London, UK, Foundation Professor of Obstetrics and Gynaecology, University of Nicosia, Cyprus, and Visiting Professor, Institute of Global Health, Imperial College London, UK

### **Shankari Arulkumaran**

Specialist Registrar in Obstetrics and Gynaecology, Northwick Park Hospital, London, UK

### **Diogo Ayres-de-Campos**

Associate Professor, Department of Obstetrics and Gynecology, Medical School, University of Porto, S. Joao Hospital, INEB – Institute of Biomedical Engineering, Porto, Portugal

### **Edwin Chandrarahan, MBBS, MS (Obs & Gyn), DFFP, DCRM, MRCOG, FSLCOG**

Consultant Obstetrician and Gynaecologist/Lead Clinician Labour Ward, St George's Healthcare NHS Trust, London, UK

### **Laura Coleman**

Specialist Registrar in Obstetrics and Gynaecology, St Michael's Hospital, Bristol, UK

### **Katie Cornthwaite, BA, MBBS**

Academic Clinical Fellow, Department of Women's Health, North Bristol NHS Trust, Southmead Hospital, Bristol and University of Bristol, Bristol, UK

### **Joanna F. Crofts, MRCOG, MD**

School of Social and Community Medicine, University of Bristol, Bristol, UK

### **Anushuya Devi Kasi, MBBS, MD (Obs and Gyn), DFFP, MRCOG**

Senior Registrar, St George's Healthcare NHS Trust, London, UK

### **Mandish K. Dhanjal, BSc, MRCP, FRCOG**

Consultant Obstetrician and Gynaecologist, Queen Charlotte's and Chelsea Hospital, Imperial College Healthcare NHS Trust, and Honorary Senior Lecturer, Imperial College, London, UK

### **Stergios Doumouchtsis**

Consultant Obstetrician, Gynaecologist and Urogynaecologist, Department of Obstetrics and Gynaecology, Epsom & St Helier University Hospitals NHS Trust, UK

### **Leroy C. Edozien, PhD, FRCOG, FWACS**

Consultant in Obstetrics and Gynaecology, Manchester Academic Health Science Centre, St Mary's Hospital, Manchester, UK

### **Jonathon Francis, MBChB, FRCA**

Consultant Obstetric Anaesthetist, Norfolk and Norwich University Hospital, Norfolk, UK

### **David Fraser**

Consultant Obstetrician and Gynaecologist, Norfolk and Norwich University Hospital, Norwich, UK

### **Kim Hinshaw, MB, BS, FRCOG**

Consultant Obstetrician and Gynaecologist, Director of Research and Innovation, City Hospitals Sunderland NHS Foundation Trust, Sunderland, UK

### **Jessica Hoyle, MBBS BSc FRCA MA**

Consultant Anaesthetist, Whipps Cross University Hospital, Barts Health NHS Trust, London, UK



List of Contributors

**Guy Jackson, MBBS, FRCA**

Consultant Anaesthetist, Anaesthetic Department,  
 Royal Berkshire NHS Foundation Trust, Reading,  
 Berkshire, UK

**Jan Stener Jørgensen, MD, PhD**

Professor of Obstetrics, Research Unit of Gynecology  
 and Obstetrics, Department of Gynecology and  
 Obstetrics, Institute of Clinical Research, Odense  
 University Hospital, University of Southern  
 Denmark, Odense, and Centre for Innovative Medical  
 Technology, Odense University Hospital, Odense,  
 Denmark

**Nina Johns, MBBS, FRCOG**

Consultant Obstetrician, Birmingham Women's  
 Hospital, Birmingham, UK

**Gabriel Kalakoutis, MD, MBBS, FRCOG**

Senior Lecturer in Obstetrics and Gynaecology,  
 University of Nicosia Medical School, Cyprus

**Hajeb Kamali, MBChB, BSc**

Obstetrics and Gynaecology Registrar, Severn  
 Deanery, UK

**Justin C. Konje, MD, FRCOG**

Consultant Obstetrician and Gynaecologist,  
 Reproductive Sciences Section, Department of  
 Obstetrics and Gynaecology, University of Leicester,  
 University Hospitals of Leicester, Leicester, UK,  
 and Department of Obstetrics and Gynecology,  
 Sidra Medical and Research Center, Doha, Qatar

**Ronald F. Lamont, PhD, FRCOG**

Professor, Research Unit of Gynecology and  
 Obstetrics, Department of Gynecology and  
 Obstetrics, Institute of Clinical Research, Odense  
 University Hospital, University of Southern  
 Denmark, Odense, Denmark, and Division of  
 Surgery, Northwick Park Institute for Medical  
 Research Campus, University College London,  
 London, UK

**Tak Yeung Leung, MD, FRCOG**

Professor, Department of Obstetrics and  
 Gynaecology, The Chinese University of Hong Kong,  
 Hong Kong

**Tsz Kin Lo**

Consultant, Department of Obstetrics and  
 Gynaecology, Princess Margaret Hospital,  
 Hong Kong, Hong Kong

**Paul Mannix, MBBS, MD, MRCP, FRCPCH**

Consultant Neonatologist, North Bristol NHS Trust,  
 Southmead Hospital, Bristol, UK

**K. Muhunthan, MBBS, MS, FRCOG**

Head, Senior Lecturer and Consultant Obstetrician  
 and Gynecologist, Department of Obstetrics and  
 Gynaecology, Faculty of Medicine, University of  
 Jaffna, Sri Lanka

**Deirdre J. Murphy, MBBS, PhD, FRCOG**

Professor of Obstetrics and Head of Department,  
 Coombe Women and Infants University Hospital,  
 Dublin, Ireland

**Osric Navti, MBBS, MRCOG**

University Hospitals of Leicester, Leicester, UK

**Catherine Nelson-Piercy, MA, FRCP, FRCOG**

Professor of Obstetric Medicine, Guy's and St  
 Thomas' Foundation Trust, and Queen Charlotte's  
 and Chelsea Hospital, London, UK

**Daisy Nirmal, MBBS, MRCOG, MClinEd**

Consultant Obstetrician and Gynaecologist,  
 Norfolk and Norwich University Hospital,  
 Norwich, UK

**Ana Pinas Carrillo, Dip in O&G (Spain), DFM (UK)**

Locum Consultant in Obstetrics and Fetal Medicine,  
 St George's Healthcare NHS Trust, Blackshaw Road,  
 London, UK

**Mark Porter, FRCA**

Consultant Anaesthetist, University  
 Hospitals Coventry and Warwickshire,  
 Coventry, UK

**Neelam Potdar, MBBS, MD, MRCOG**

University Hospitals of Leicester, Leicester, UK

**Mariana Rei**

Invited Lecturer, Department of Obstetrics and  
 Gynecology, Medical School, University of Porto, S.  
 Joao Hospital, INEB – Institute of Biomedical  
 Engineering, Porto, Portugal

**Dimitrios M. Siassakos, MD, MRCOG**

Department of Women's Health, North Bristol NHS  
 Trust, Southmead Hospital, and University of Bristol,  
 Bristol, UK

**Bryony Strachan, MBBS, MD, FRCOG**

St Michael's Hospital, Bristol, UK

## List of Contributors

**Abdul H. Sultan, MBBS, MD, FRCOG**

Consultant Obstetrician Gynaecologist,  
Croydon University Hospital, Croydon,  
Surrey, UK

**Vikram Sinai Talaulikar, MD, MRCOG**

Clinical Research Fellow, Department of Obstetrics  
and Gynaecology, St George's University of London,  
London, UK

**Ranee Thakar, MBBS, PhD, FRCOG**

Consultant Urogynaecologists, Croydon University  
Hospital, Croydon, Surrey, UK

**Rosemary Townsend, MBChB**

Specialist Trainee in Obstetrics and Gynaecology,  
St George's Healthcare NHS Trust, London, UK

**Austin Ugwumadu, MBBS, PhD, FRCOG**

Clinical Director of Obstetrics and Gynaecology and  
Hon. Senior Lecturer and Consultant, St George's  
Healthcare NHS Trust, London, UK

**Gerard H. A. Visser, MD, PhD, FRCOG(ae)**

Emeritus Professor of Obstetrics, Department of  
Obstetrics, University Medical Center Utrecht,  
Utrecht, the Netherlands

**James J. Walker, MD, FRCOG**

Professor of Obstetrics and Gynaecology, University  
of Leeds, Leeds, UK

**Stephen Walkinshaw, BSc (Hons), MD, FRCOG**

Retired Consultant in Maternal and Fetal Medicine,  
Liverpool

**Melissa Whitten, MD, MRCOG**

Consultant in Obstetrics and Fetal Medicine,  
University College London Hospitals, and Module  
Lead for MBBS Women's Health and Men's Health,  
University College London, UK

**Steve Yentis, MD, FRCA**

Consultant Anaesthetist, Chelsea and Westminster  
Hospital, and Honorary Reader, Imperial College,  
London, UK

## Preface to the Second Edition

*Best Practice in Labour and Delivery* is a comprehensive textbook of 33 chapters that cover most topics of importance that one should know in labour and delivery. Starting from basic anatomy and physiology, the book covers the entire spectrum of problems encountered in labour and delivery. Special attention is paid to topics of importance that result in maternal and fetal morbidity and mortality. The layout and rational arrangement of chapters makes the book easy to navigate and read; this is made more simple by use of easy-to-assimilate tables, care pathways, suitable illustrations and pictures.

Each chapter has been contributed by nationally and internationally recognized experts. In addition to the latest evidence from guidelines published by various colleges from the UK and other countries, and the Cochrane Database, the authors have distilled the recommendations from the NICE guidelines on intrapartum care published in December 2014 and the recommendations from the UK Confidential Enquiries into Maternal Deaths, released in January 2015. Most

authors have carried out original research into the topics chosen and their work blends into the respective chapters. In addition to technical aspects of labour and delivery, the important aspects of non-technical skills needed for good practice, prioritization to give care, clinical governance, risk management and objective structured assessment of technical skills are dealt with in detail. These chapters will help each and every consultant and trainee, especially those who have opted to train in advanced labour ward practice.

I am grateful to the contributors, who have sacrificed a lot of their time to provide us with the excellent chapters. Even with scrupulous proofreading there may be mistakes, and some facts may be wrong or controversial. I would be most grateful to the readers for writing to me as the editor, or to the publisher, so that we can rectify any problems in the next reprint.

Yours sincerely,

Sir Sabaratnam Arulkumaran

## Preface to the First Edition

Those privileged to look after women during their labours and deliveries have a duty to practise to the highest standards. A clear understanding of what constitutes best practice will help to ensure the safety and health of mothers and babies through parturition.

Whilst the encouragement of normality is implicit, abnormality in labour must be recognized promptly and, when necessary, must be appropriately managed to ensure best outcome.

An understanding of normality and when and how to intervene are the keys to good clinical care. This textbook is an encompassing reference covering all the essential information relating to childbirth; it offers clear practical guidance across the width of labour and delivery.

We are very grateful to those well-known leading experts who, despite their busy lives, have made such excellent contributions to this definitive text. Each chapter offers a modern authoritative review of best practice with the evidence base for good clinical care necessary to optimize outcome through appropriate clinical management and justifiable intervention.

Whilst this is an ideal textbook for those training or taking examinations in labour ward practice, it offers all those professionals caring for the labouring woman a modern, evidence-based approach, which will help them understand and deliver the best possible clinical care. The importance of team working, prioritizing and

the organization of maternity care receive appropriate emphasis with clear guidance and practical advice.

Guided by appropriate, clearly defined management pathways, based on national guidance, attending professionals will be best placed to improve safety and the quality of the labour process for both mother and baby.

The auditing and monitoring of standards and outcomes are vital to the organization and improvement of maternity services. The recent introduction of Clinical Dashboards (Appendix A) promises to be a major advance by facilitating the monitoring through traffic light recording of performance and governance (including clinical activity, workforce, outcomes risk incidents, complaints/women's feedback about care) against locally or nationally agreed benchmarked standards.

This book contains the most up-to-date references and evidence base, including from the Guidelines and Standards of the Royal College of Obstetricians and Gynaecologists ([www.rcog.org.uk](http://www.rcog.org.uk)) and the National Institute for Health and Clinical Excellence ([www.nice.org.uk](http://www.nice.org.uk)). We believe that this textbook will be of great value for all midwives and doctors overseeing and managing childbirth.

Richard Warren  
Sir Sabaratnam Arulkumaran

## Acknowledgements

The editor would like to sincerely thank the authors for their excellent contributions to the second edition of the book. I thank Mrs Sue Cunningham for inviting and reminding the authors and for collating and finalizing the edited chapters. I am most grateful to Nick Dunton and Kirsten Bot of Cambridge University

Press for their constant support and for their patience in producing this book.

I am indebted to Gayatri, Shankari, Nishkantha and Kailash for their kind understanding of my time away from them in doing all the writing and editing.

## Chapter

## 1

# Pelvic and Fetal Cranial Anatomy and the Stages and Mechanism of Labour

K. Muhunthan

## Introduction

Labour or parturition is the culmination of a period of pregnancy whereby the expulsion of fetus, amniotic fluid, placenta and membranes takes place from the gravid uterus of a pregnant woman. In a woman with a regular 28-day cycle, labour is said to take place 280 days after the onset of the last menstrual period. However, the length of human gestation varies considerably among healthy pregnancies, even when ovulation is accurately measured in naturally conceiving women [1].

Successful labour passes through three stages: the shortening and dilatation of the cervix; descent and birth of the fetus; and the expulsion of the placenta and membranes. Efficient uterine contractions (power), an adequate roomy pelvis (passage) and an appropriate fetal size (passenger) are key factors in this process.

## Anatomy of the Female Pelvis

The bony pelvis consists of the two innominate bones, or hipbones, which are fused to the sacrum posteriorly and to each other anteriorly at the pubic symphysis. Each innominate bone is composed of the ilium, ischium and pubis, which are connected by cartilage in youth but fused in the adult (Figure 1.1). The pelvis has two basins: the major (or greater) pelvis and the minor (or lesser) pelvis. The abdominal viscera occupy the major pelvis and the minor pelvis is the narrower continuation of the major pelvis. Inferiorly, the pelvic outlet is closed by the pelvic floor.

The female pelvis has a wider diameter and a more circular shape than that of the male. The wider inlet facilitates engagement of the fetal head and partu-

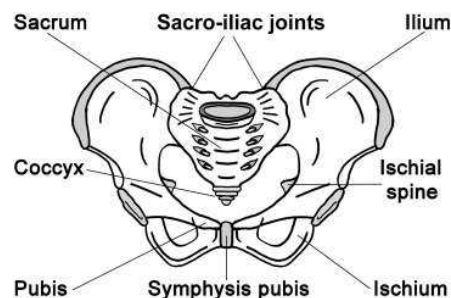


Figure 1.1 Bony female pelvis.

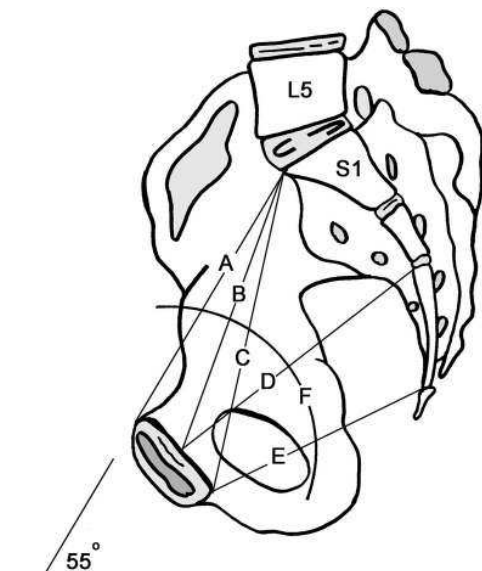
rition. Numerous projections and contours provide attachment sites for ligaments, muscles and fascial layers. This distinctive shape of the human pelvis is probably not only the result of an adaptation to a bipedal gait, but also a result of the need for a larger birth canal for a human fetus with a large brain [2].

The female pelvis is tilted forwards relative to the spine and described as the deviation of the pelvic inlet from the horizontal in the sagittal plane. The pelvic 'tilt' or angle of inclination is measured as an angle between the line from the top of the sacrum to the top of the pubis, and a horizontal line in a standing radiograph (Figure 1.2).

The pelvic tilt is variable between different individuals and between different races; in adult Caucasian females the pelvis is usually about 55° to the horizontal plane. It is also position-dependent and increases with growth into adulthood [3].

Based on the characteristic of the pelvic inlet, it is classified into four basic shapes: the round (gynaecoid), the wedge-shaped (android), the longitudinal oval (anthropoid) and the transverse oval (platypelloid) type of inlet (Figure 1.3). However, a large

Chapter 1: Pelvic and Fetal Cranial Anatomy



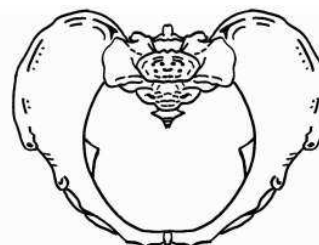
**Figure 1.2** Sagittal section of the pelvis with 55° inclination.  
 A: anatomical conjugate; B: obstetric conjugate; C: diagonal conjugate; D: mid-cavity; E: outlet; F: pelvic axis.

number of pelves appear to conform to intermediate shapes between these extreme types [4].

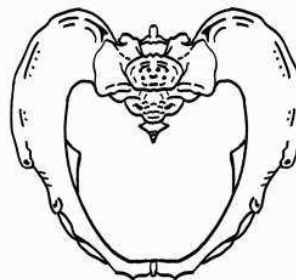
The true pelvis is a bony canal, through which the fetus must pass, and has three parts: the inlet, the pelvic cavity and the outlet. The pelvic inlet is bounded anteriorly by the pubic crest and spine; posteriorly by the promontory of the sacrum and ala; and laterally by the iliopectineal line. In an adequately sized pelvis the inlet's diameter antero-posteriorly is usually more than 12 cm, and the transverse diameter is 13.5 cm.

The antero-posterior diameter of the pelvic *inlet* is also known as the true or anatomical conjugate. However, clinically the fetus must pass through the obstetric conjugate, which is the line between the promontory of the sacrum and the innermost part of the symphysis pubis, which is usually more than 10 cm. The conjugate that can be measured clinically is the diagonal conjugate, which is the line between the sacral promontory and the lowermost point of the symphysis pubis. This is about 1.5–2 cm greater than the obstetric conjugate (Figure 1.2).

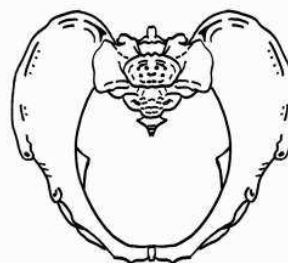
The *mid-cavity* is a curved canal with a straight and shallow anterior wall which is the pubis. The posterior wall is bounded by the deep and concave sacrum and laterally by the ischium and part of the ilium. In the mid-cavity both antero-posterior (AP) and transverse diameters are usually approximately 12.5 cm.



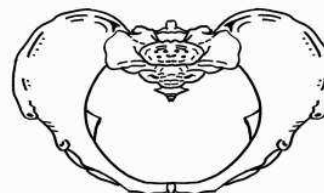
**Gynaecoid pelvis**  
 Most common and classical female pelvis.  
 Round inlet.



**Android pelvis**  
 Resembles human male pelvis.  
 Heart-shaped inlet and narrow outlet.



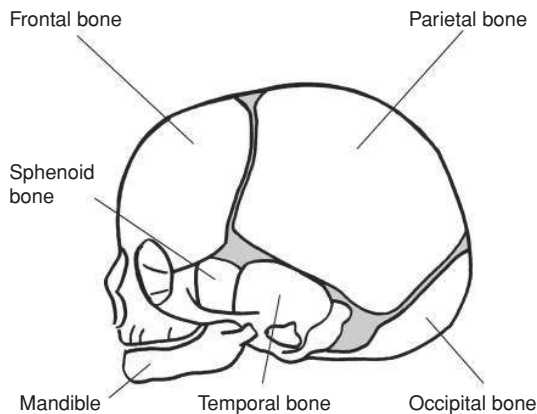
**Anthropoid pelvis**  
 Resembles pelvis of anthropoid ape.  
 Oval shaped inlet and wider A-P diameter.



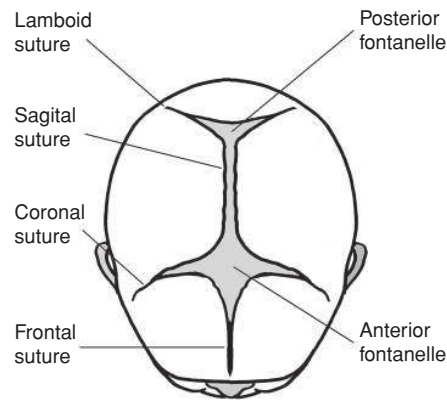
**Platypelloid pelvis**  
 Flattened inlet.  
 Wider transverse diameter.

**Figure 1.3** Four basic shapes of pelvis.





**Figure 1.4** Fetal skull bones.



**Figure 1.5** Sutures and fontanelles of the fetal skull.

The pelvic *outlet* is the lower circumference of the lesser pelvis. It is very irregular and bounded by the pubic arch anteriorly, ischial tuberosities laterally and sacrotuberous ligament and the tip of the coccyx posteriorly.

In order to have a successful delivery the fetus has to pass through this bony canal; the axis through which the fetus travels is an imaginary line joining the centre points of the planes of the inlet, cavity and outlet.

## Anatomy of the Fetal Skull

The human fetal skull is considered to be the largest compared to the pelvic size of all other living primates and the most difficult part of the fetus to pass through the mother's pelvic canal, due to its hard, bony nature [5].

The skull bones encase and protect the brain, which is very delicate and subjected to pressure when the fetal head passes down the birth canal. The fetal cranium is composed of nine bones (occipital, two parietal, two frontal, two temporal, sphenoid and ethmoid). Of these, the bones that compose the skull are of clinical importance during birth (Figure 1.4).

The fetal skull bones are as follows:

1. The *frontal bone*, which forms the forehead. In the fetus, the frontal bone is in two halves which fuse (join) into a single bone after the age of eight years.
2. The two *parietal bones*, which lie on either side of the skull and occupy most of the skull.

3. The *occipital bone*, which forms the back of the skull and part of its base. It joins with the cervical vertebrae.
4. The two *temporal bones*, one on each side of the head, closest to the ear.

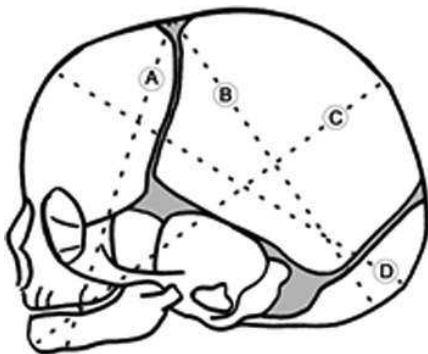
Sutures are joints between these bones of the skull. The *lambdoid suture* forms the junction between the occipital and the parietal bones; the *sagittal suture* joins the two parietal bones together; the *coronal suture* joins the frontal bones to the two parietal bones; and the *frontal suture* joins the two frontal bones together.

A fontanelle is the space created by the joining of two or more sutures. It is covered by thick membranes and the skin on the fetal head, protecting the brain underneath. The anterior fontanelle (also known as the bregma) is a diamond-shaped space towards the front of the fetal head, at the junction of the sagittal, coronal and frontal sutures. The posterior fontanelle (or lambda) has a triangular shape, and is found towards the back of the fetal skull. It is formed by the junction of the lambdoid and sagittal sutures.

In the fetus they permit their movement and overlap during labour under the pressure on the fetal head as it passes down the birth canal. This process, called *moulding*, can decrease the diameters of the fetal skull. The suboccipito-bregmatic diameter is more sensitive to the changes of labour force than other fetal skull diameters [6]. Significant moulding with caput can be a sign of cephalo-pelvic disproportion and this should be ruled out before attempting an instrumental vaginal delivery [7]. During early childhood, these sutures



## Chapter 1: Pelvic and Fetal Cranial Anatomy



**Figure 1.6** Fetal skull diameters. A: submento-bregmatic (9.5 cm); B: suboccipito-bregmatic (9.5 cm); C: mento-vertical (13.5 cm); D: occipito-frontal (11.5 cm).

harden and the skull bones can no longer move relative to one another, as they can to a small extent in the fetus and newborn.

The widest transverse diameter of the fetal skull is the biparietal diameter, which is 9.5 cm. The AP diameter of the fetal head is determined by the degree of flexion of the fetal head. This also determines which region of the fetal skull is presenting during labour, and it is described as lines that correspond to the diameter of the presenting region of the head (Figure 1.6). The suboccipito-bregmatic (fully flexed vertex) and the submento-bregmatic (face) are the narrowest AP diameters at 9.5 cm each. The widest AP diameter is 13.5 cm, and is with the fully extended head which is the mento-vertical of a brow presentation. The occipito-frontal (11.5 cm) diameter is seen with deflexed vertex presentation.

Identification of these regions and landmarks on the top of the fetal skull has particular importance for obstetric care when vaginal assessments are made during labour.

### The Uterus During Pregnancy

After conception, the uterus provides a nutritive and safe environment for the embryo to develop as a fetus until delivery. The uterus undergoes extensive adaptations mainly with regards to size, shape, position, vasculature and its ability to contract.

#### Uterine Size

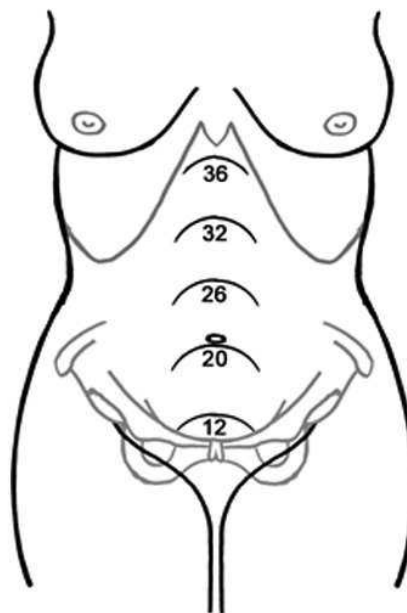
In an uncomplicated pregnancy by term, approximately the weight of the uterus increases 20-fold (from 70 g to 1000 g) and the volume by 500-fold (10 cc to

5000 cc). This increase of capacity can be expected to accommodate the fetus, placenta and amniotic fluid.

Early in gestation, uterine hypertrophy probably is stimulated by the action of mainly estrogen and also of progesterone. Later in pregnancy hypertrophy of cells of the uterus is due to response to the biological mechanical stretching of uterine walls by the growing fetus and placenta [8]. In this process of hypertrophy, stretching of muscle cells along with accumulation of fibrous and elastic tissue plays a major role, and the production of new myocytes is limited.

### Uterine Shape and Position

From its original pear shape, the uterus assumes a globular shape as the pregnancy advances. It becomes palpable abdominally by 12 weeks as it is too large to remain totally within the pelvis. From this point onwards it can be measured and palpated as it is in contact with the anterior abdominal wall (Figure 1.7). By term it almost reaches the liver and this exponential enlargement of the uterus displaces the bowels laterally and superiorly. In supine position it rests on the vertebral column and the adjacent great vessels, especially the inferior vena cava and aorta. It also undergoes *dextrorotation*, which is likely caused by the recto-sigmoid



**Figure 1.7** Height of the uterus at various weeks of pregnancy.

colon on the left side of the pelvis. As the uterus rises, tension is exerted on the broad and round ligaments.

## Uterine Vascular Adaptations

The regulation of uterine vascular remodelling during pregnancy is part of the larger set of adaptive physiological processes required for a successful pregnancy outcome.

A multitude of physiological adaptations of the cardiovascular system takes place during pregnancy; the most notable changes are the increase in intravascular volume and cardiac output. Cardiac output increases from 3.5 to 6.0 l/min at rest, a rise of close to 40%. These changes begin as early as the first trimester of pregnancy.

The greatest changes, however, are those occurring in the uteroplacental circulation.

Haemochorial placentation in humans results in decreased downstream resistance and secretion of molecular signals. The former results in increased upstream flow velocity and initiates nitric oxide (NO) secretion as well as other effects that lead to changes in cell and matrix properties. The combination of vasodilation, changes in matrix enzymes and cellular architecture leads to an increase in lumen diameter without any change in wall thickness, decreased resistance and increased uteroplacental flow [9]. As a result, an even greater fall in vascular resistance preferentially directs some 20% of total cardiac output to this vascular bed by term, amounting to a 10-fold or greater increase over levels present in the non-pregnant state, such that, by term, uteroplacental flow may approach 1 l/min [10].

## Uterine Contractility

Adaptations of human myometrium during pregnancy include cellular mechanisms that preclude the development of high levels of myosin light chain phosphorylation during contraction and an increase in the stress-generating capacity for any given level of myosin light chain phosphorylation. This process is said to be mediated through  $\text{Ca}^{2+}$  [11]. From the first trimester onward, the uterus undergoes irregular painless contraction that becomes manually detectable during the mid-trimester. These contractions vary in intensity and timing and are called *Braxton Hicks contractions* [12]. Gradually they increase in intensity and frequency during the last week or two and may cause some discomfort late in pregnancy.

## Length of Pregnancy and Initiation of Labour

### Length of Pregnancy

Length of pregnancy in humans averages 40 weeks. Little is known about the factors determining length of pregnancy, but it has been thought to be controlled by events occurring in late pregnancy that influence timing of parturition. Thus, preterm birth is a consequence of premature activation of parturition by a pathological process. In humans, timing of birth is associated with expression of the gene responsible for corticotrophin-releasing hormone (CRH) by the placenta. Maternal plasma concentration of CRH is a potential marker of this process. It has been postulated that a placental clock determines the timing of delivery [13].

### Initiation of Labour

During pregnancy, the uterus is maintained in a state of functional quiescence through the integrated action of one or more of a series of inhibitors. Cervical ripening and myometrial contraction are main contributing factors for the initiation of labour, and they start a few weeks before the true labour. It is considered that there is an interaction between maternal and fetal factors that initiate labour in humans. Maternal endocrine and genetic factors and the influence of fetal factors play an important role.

### Maternal Endocrine and Genetic Influence

The functional quiescence during pregnancy is maintained by the integrated action of one or more of a series of inhibitors, including progesterone, prostacyclin, relaxin, nitric oxide, parathyroid hormone-related peptide, calcitonin gene-related peptide, adrenomedullin and vasoactive intestinal peptide.

Change in the oestrogen:progesterone ratio, CRH, prostaglandins, oxytocin and contraction-associated proteins are some of the other factors that influence onset of labour [14]. Also it is noted that women who carried polymorphic tumour necrosis factor (*TNF  $\alpha$ -308*) gene have a tendency to deliver preterm [15].

### Fetal Influence

Initiation of labour at term or even preterm is also influenced by signals from the fetus. Its growth, resulting in uterine stretch, increased surfactant protein-A



## Index

- ABC assessment 335, 339  
 abdominal examination 18  
 abdominal palpation 6–8, 18, 60  
   asynclitism 8  
   attitude 8  
   engagement 7  
   first stage of labour 18  
   Leopold manoeuvres 6, 7  
   lie 8  
   position 8  
   presentation 7  
   symphysio-fundal height 7  
   uterine contractions 62  
 ABILHAND-Kids system 373  
 abruptio *see* placental abruptio  
 acidaemia 44  
 acidosis 67  
 action line 15, 23, 24  
 activated factor VII 187–188  
 Addison's disease 273  
 adherent placenta 174  
 admission test cardiocography 41  
 adverse drug reactions 207–208  
   anaphylaxis 207–208  
   drug withdrawal 208  
   toxicity/side-effects 208  
 air embolus 209  
 airway obstruction 206  
 alert line 15, 24  
 Alexandria units 66  
 American College of Chest Physicians (ACCP) 329  
 American College of Nurse-Midwives (ACNM) 289  
 American College of Obstetricians and Gynecologists (ACOG) 93, 284  
 American Society of Anesthesiologists (ASA) 284  
 amniocentesis in pPROM 246–247  
 amnioinfusion 79  
 amniotic fluid 14  
   embolus 205, 233  
   MSAF 20, 41  
 amniotomy 25, 231–232  
 anaemia, postpartum 332  
 anaesthesia 34–37  
   choice of technique 34  
   complications 330  
   first stage of labour 19  
   follow-up 37  
   general *see* general anaesthesia  
   TOLAC 284–285  
 anal sphincter injury 112, 212  
   *see also* obstetric perineal trauma  
 anal triangle 213–214  
 analgesia 28–34  
   first stage of labour 19  
   invasive methods 31–34  
     combined spinal-epidural 33  
     epidural *see* epidural analgesia  
     intravenous opioids 33–34  
   midwife-led 30–31  
     Entonox 30  
     pethidine 30  
     relaxation techniques 30  
     TENS 30  
   neuraxial 32  
   non-evidence-based methods 31  
   TOLAC 284–285  
   twin birth 137  
 anaphylaxis 207–208  
 antenatal  
   classes 29–30  
   counselling, after failed induction 238  
   education 353  
   risk factors  
     cerebral palsy 376–377  
     morbidly adherent placenta 192  
     shoulder dystocia 148–149  
 antepartum haemorrhage 157–167  
 aetiology 157  
 history 157  
 initial management/investigations 158  
 physical examination 157  
 placenta accreta/percreta 125, 162  
 placenta praevia *see* placenta praevia  
 placental abruptio 69, 78,  
   162–167  
   vasa praevia 77, 162  
 antepartum uterine rupture 296  
 anti-D immunoglobulin 326  
 antibiotics  
   anaphylaxis 207  
   intentional retention of placenta 195–196  
   obstetric perineal trauma 220–221  
   pPROM 244–245, 246  
   sepsis 204  
 anticoagulant therapy 267–269  
   LMWH 266, 267–269  
     full anticoagulation 268–269  
     prophylaxis for recurrent miscarriage 267  
     prophylaxis for thrombosis 268  
   warfarin 269, 329  
 antihypertensive therapy 305–307  
   *see also individual drugs*  
 antiretroviral therapy 277  
 anxiety 332  
 aortic dissection 207  
 aorto-caval compression 19, 77  
 Apgar score 45, 47  
 apnoea  
   primary 313, 314, 315  
   terminal 313, 314, 315, 316  
 arrhythmias 207  
 artificial rupture of membranes *see* amniotomy  
 asphyxia, fetal 74  
   umbilical cord prolapse 144  
 aspiration pneumonitis 206  
 assertiveness 397  
 asthma 207, 274  
 asymmetrical macrosomic fetus 106  
 asynclitism 8, 106, 109, 110  
 atelectasis 206  
 atosiban 79, 253, 254–255  
   safety 255  
   vs. beta<sub>2</sub>-agonists 255  
 attitude 8  
 augmentation of labour 21–22  
   active phase 24–25  
   duration 26  
   indications 22–23  
   latent phase 24  
   TOLAC 285  
   *see also* induction of labour  
 auscultation, intermittent 40–41  
 bag and mask ventilation 315  
 balloon tamponade 185  
 berry aneurysm 276  
 β<sub>2</sub>-agonists 253  
   and pulmonary oedema 253–254  
   vs. atosiban 255

## Index

- bi-ischial diameter 8  
 Bimanual Fine Motor Function  
   classification 373  
 biparietal diameter 4  
 bipolar disorder 332  
 Birmingham Symptom Specific  
   Obstetric Triage system 336  
 Bishop's score 9, 227  
 bladder  
   filling 147  
   involvement in MAP 197  
 blood pressure measurement 304  
 blood/blood products 188  
 brachial plexus injury 154–155  
   classification 154–155  
   Erb's palsy 113, 154  
   Klumpke's palsy 113, 155  
   total 155  
   risk of 154  
 Bracht technique 133, 134  
 bradycardia 43, 203  
 Brandt Andrews manoeuvre 173  
 Braxton Hicks contractions 5, 17  
 breast pain 331  
 breastfeeding 326  
 breathlessness 203  
 breech birth 128–135  
   Bracht technique 133, 134  
   delay in delivery of arms 134–135  
   classical arm development 134  
   Lovset's manoeuvre 134  
   nuchal arms 135  
   external cephalic version 129–130  
   conduct of 130  
   efficacy 129  
   improving success of 129  
   safety 129  
   uptake 129  
   head entrapment 135  
   preterm labour 260  
   at term 128–129  
   TOLAC 287  
   twins, preterm 139  
   vaginal 130–133  
   assisted 132–133  
   conduct of 131–132  
   contraindications 130  
   first stage of labour 132  
   selection for 130–131  
 bupivacaine 35  
 buttonhole tears 219  
 caesarean section 14, 37, 75, 120–126,  
   353  
   anaesthesia 34–37  
   classification 120–121  
   complications 124–125  
   early maternal 124–125  
   fetal 125  
   late maternal 125  
   incidence 121–122  
   indications 120–122  
   cardiovascular disease 265  
   failed induction 239  
   malpresentation 95  
   umbilical cord prolapse 147–148  
   intrapartum fetal distress 80–81  
   Lucas classification of urgency 34  
   and morbidly adherent placenta  
   192, 193  
   NICE guidance 37, 124  
   placental delivery 173  
   preterm labour 259  
   previous 252  
   antenatal management 280–284  
   counselling 283–284  
   elective repeat caesarean delivery  
   see elective repeat caesarean  
   delivery  
   trial of labour see TOLAC  
   reasons for 89  
   scar rupture 67  
   shoulder dystocia 153  
   techniques 122–124  
   modified Joel-Cohen method  
   122  
   Pfannenstiel method 123  
   and uterine contractions 67–68  
   and uterine rupture 123, 293–294  
   vaginal birth after 236  
   vs. operative delivery 101  
 calcium channel blockers 253, 254  
   see also nifedipine  
 caput 22, 52  
 carbetocin 123, 172, 173  
   postpartum haemorrhage 185  
 carbohydrate-based isotonic sport  
   drinks 91  
 carboprost 173, 266  
 cardiac compressions 318  
 cardiac disease 206–207  
   aortic dissection 207  
   arrhythmias 207  
   myocardial infarction 207  
   see also cardiovascular disease  
 cardiac output, pregnancy 5  
 cardiac pain 203  
 cardinal movements 11  
 cardiomyopathy, peripartum  
   205  
 cardiotocography 40, 55  
   accelerations 45  
   on fetal stimulation 52  
   admission test 41  
   analysis of trace 50  
   baseline rate 43–44  
   baseline variability 45  
   decelerations 45–50  
   early 45  
   late 46–47  
   prolonged 48–50  
   variable 47–48  
   interpretation 43–52  
   response to 350  
   sinusoidal pattern 50  
   suspicious, conservative measures  
   50–52  
 cardiovascular assessment 203  
 cardiovascular disease 264–271  
   anticoagulants see anticoagulant  
   therapy  
   indications for caesarean section  
   265  
   infective endocarditis 266  
   mode of delivery 265–266  
   monitoring 266  
   postpartum haemorrhage 266  
   regional analgesia 266  
   thrombosis 266  
   timing of delivery 265  
 ceftriaxone 246  
 cell salvage 188  
 cephalhaematoma 75, 100  
   postoperative delivery 112  
 cephalic presentation  
   preterm labour 260  
   second twin 138  
 cephalo-pelvic disproportion 3, 95,  
   295  
 cerebral arteriovenous malformations  
   276  
 cerebral palsy 370–377  
   antenatal risk factor identification  
   376–377  
   classification 370–373  
   Gross Motor Function system  
   372  
   definition 370  
   diagnosis 373  
   events in labour 374–375  
   neuroimaging 376  
   pathogenesis and risk factors  
   373–374  
   status marmoratus 371  
 cerebral vein thrombosis 205  
 cervix  
   assessment 9–10  
   consistency 9  
   dilatation 9  
   nomograms 15–17  
   secondary arrest 21  
   effacement 9  
   length 228  
   preterm labour 251  
   position 9  
   ripening 5, 227  
   Bishop's score 9, 227  
   station 9–10  
 CESDI report 131–132  
 chest pain 203

- childbirth  
 preparation for 29–30  
 women's choices in 29
- chorioamnionitis 243, 244
- clindamycin 246
- clinical assessment 6–10  
 abdominal palpation 6–8  
 cervix 9–10  
 pelvis 8–9
- clinical behaviour change 363
- Clinical Negligence Scheme for Trusts 347
- clinical scenarios 340–344, 360, 365
- closed-loop communication 398
- co-amoxiclav 244
- combined spinal-epidural 33
- communication 362, 397–398  
 closed-loop 398  
 handover 349, 397
- compression sutures 186
- Confidential Enquiries into Maternal Deaths and Morbidity 233, 304, 357
- Confidential Enquiries into Stillbirths and Deaths in Infancy 390
- confirmation bias 392
- congenital malformations  
 neonatal resuscitation 322  
 uterus 295
- connective tissue disorders 295
- Consortium on Safe Labor 15
- continuous positive airway pressure (CPAP) 312, 321
- controlled cord traction 173
- cord *see* umbilical cord
- coronal suture 3
- corticosteroids  
 pPROM 245  
 pre-eclampsia/eclampsia 308
- corticotrophin-releasing hormone (CRH) 5
- cost-effectiveness of training 364
- COX-2 6
- CPAP *see* continuous positive airway pressure
- creatinine 304
- Crede manoeuvre 173
- Crew Resource Management programmes 361
- cricoid pressure 85
- critical incident review (CIR) 391
- curve of Carus 110
- cystic fibrosis 274
- decision-to-delivery interval (DDI) 100
- decision making 395–396  
 improvements in 395–396
- depression 332
- designing for safety 349–351
- early detection of deterioration 351
- good handover practice 349
- maintaining situational awareness 350
- oxytocin use 350–351
- response to cardiography 350
- standardization of care 349
- diabetes mellitus 208, 271–273  
 gestational 273  
 induction of labour 235
- induction of labour 235  
 pre-existing 271–273  
 delivery 271  
 diabetic control 272–273  
 insulin sliding scale 272  
 neonatal care 273  
 postpartum period 273  
 and shoulder dystocia 148
- diagonal conjugate 2
- diamorphine 19, 35
- diaphragmatic hernia 322
- diazepam 275
- digital elevation 147
- dinoprostone 228–229
- disseminated intravascular coagulation 167
- documentation  
 shoulder dystocia 153  
 training 365
- umbilical cord prolapse 148
- drug withdrawal 208
- ductus arteriosus 323
- dystocia 14, 20, 77
- Each Baby Counts* project 356
- early warning score (EWS) 391
- echocardiography 203
- eclampsia *see* pre-eclampsia/eclampsia
- elective repeat caesarean delivery (ERCD) 280, 290–291  
 adhesion prevention 290  
 fetal/neonatal benefits/risks 282  
 maternal benefits/risks 281–282  
 long-term 281–282  
 short-term 281  
 timing 290  
 vs. TOLAC 281–282
- electrocardiography (ECG) 53, 203
- electromyography (EMG) 64
- electronic fetal monitoring  
 continuous 42–43  
 intermittent 41  
 indications 42
- embolus  
 air 209  
 amniotic fluid 205  
 pulmonary 205
- 'en caul' delivery 260
- endocarditis, infective 266
- engagement 7, 11
- Entonox 19, 30
- epidural analgesia 19, 31–33, 35, 86  
 breech birth 131  
 complications 33  
 hypotension 33  
 intrapartum fever 33  
 motor blockade 33  
 post-dural puncture headache 32  
 effect on labour 32  
 indications/contraindications 31  
 and prolonged second stage 96  
 reduced aspiration risk 86  
 technique 31–32  
 TOLAC 284
- epidural haemorrhage 113
- epilepsy 208, 274–275  
 seizure control 275
- episiotomy 212–215, 217–218, 224  
 indications 215–216  
 prolonged second stage 97–98  
 shoulder dystocia 151
- Erb's palsy 113, 154
- ERCD *see* elective repeat caesarean delivery
- ergometrine 37, 172, 173
- errors 391–392  
 execution 391  
 human and systems 390–393  
 management 392–393  
 mistakes 392  
 patient safety 177, 363, 389–390  
 violations 392
- erythromycin 246
- ex utero intrapartum treatment (EXIT) 295
- execution errors 391
- external cephalic version 129–130  
 conduct of 130  
 efficacy 129  
 improving success of 129  
 safety 129  
 uptake 129
- facial nerve palsy 113
- factor VII, recombinant activated 187–188
- failed induction 237–239  
 antenatal counselling 238  
 caesarean section after 239  
 definition 237–238  
 management options 238–239  
 methods of reducing 238–239  
 obese patients 228  
 reasons for 238
- failure to progress 77
- fatigue 398–399
- fenoterol 252
- fentanyl 35, 86  
 effect on gastric emptying 86



## Index

- Ferguson reflex 66, 105  
 fetal fibronectin 228  
   preterm labour 251  
 fetal monitoring  
   electronic 41, 42  
     continuous 42–43  
   first stage of labour 40–43  
   heart rate *see* cardiotocography  
   intrapartum *see* intrapartum fetal monitoring  
   maternal cardiovascular disease 266  
   pre-eclampsia/eclampsia 305  
   TOLAC 286–287  
   twin birth 137  
   umbilical cord prolapse 147  
 fetal reserve 75–76  
   prelabour assessment 76  
 fetal systemic inflammatory response syndrome (FSIRS) 247  
 fetal vibro acoustic stimulation (FAST) 52  
 fetus  
   asphyxia 74  
   attitude 8  
   caesarean section complications 125  
   ECG 53  
   heart rate 14, 18, 40, 317  
   bradycardia 43  
   monitoring *see* cardiotocography  
   RCOG categorization 51  
   tachycardia 43  
   hypoxia 41, 44  
   and cerebral palsy 374, 375  
   gaspig respiration 314, 316  
   maintenance of blood pressure 314  
   primary apnoea 313, 314, 315  
   terminal apnoea 313, 314, 315, 316  
   *see also* neonatal resuscitation  
   influence on initiation of labour 5  
   intrapartum distress *see* intrapartum fetal distress  
   intrapartum monitoring *see* intrapartum fetal monitoring  
   intrauterine death 236–237  
   lie 8  
   macrosomia 235  
     asymmetric 106  
     and induction of labour 235  
     and shoulder dystocia 148  
     TOLAC 287  
   monitoring *see* fetal monitoring  
   operative delivery trauma 112–114  
     cephalhaematoma 112  
     intracranial 113  
     nerve injury 113–114  
     scalp bruises/lacerations 112  
     subgaleal haemorrhage and cranial 112  
   position 8  
   presentation 7, 95  
     malposition of head 110–111  
   pulse oximetry 53  
   scalp blood sampling 40, 52–53  
   scalp stimulation 52  
   skull 3–4  
     bones 3  
     diameters 4  
     fontanelle 3  
     fractures 113  
     moulding 3, 22  
     sutures 3  
 fibronectin  
   fetal 228  
   preterm labour 251  
 first stage of labour 1, 10, 14–26  
   abdominal examination 18  
   amniotomy 25  
   analgesia/anaesthesia 19  
   augmentation 21–22  
     active phase 24–25  
     duration 26  
     indications 22–23  
     latent phase 24  
   breech birth 132  
   cervical dilatation 9, 15–17  
   duration 15, 20  
   fetal monitoring 40–43  
   general examination 18  
   initial assessment 17–18  
   investigations 19  
   management 17–19  
     practical aspects 23  
   meconium staining of amniotic fluid 20  
   mobility and posture 19  
   normal labour 14  
   observations 19  
   poor progress 20–21  
   uterine contractions  
     in-coordination 23, 24  
     measurement 26  
     optimal 25–26  
   vaginal examination 19  
 fluid balance in  
   pre-eclampsia/eclampsia 305, 308  
 followership 397  
 fontanelle 3  
 foramen ovale 323  
 forceps delivery 75, 105, 109–110  
   choice of 100  
   intrapartum fetal distress 81  
   prolonged second stage 99–101  
 French College of Gynecologists and Obstetricians (CNGOF) 284  
 frontal bone 3  
 frontal suture 3  
 gastric emptying, delayed 85  
   fentanyl 86  
 gastro-oesophageal reflux 85  
 general anaesthesia 36  
   complications 206  
     aspiration pneumonitis 206  
     atelectasis, respiratory depression and airway obstruction 206  
   diminishing rates 86  
   follow-up 37  
   regurgitation of stomach contents 85–86  
 genital herpes 278  
 gestational age and shoulder dystocia 149  
 gestational diabetes 273  
   induction of labour 235  
 Glasgow Coma Score 203  
 glucocorticoids 252, 257–258  
 good handover practice 349  
 Gross Motor Function Classification System 372  
 group A *Streptococcus* 328  
 group B *Streptococcal* colonization in pPROM 246  
 haematoma, postpartum 327  
 haemoperitoneum 298  
 haemophilia 270–271  
   delivery 270–271  
   postnatal period 271  
   treatment 270  
 haemorrhage  
   antepartum *see* antepartum haemorrhage  
   epidural 113  
   postpartum *see* postpartum haemorrhage  
   subarachnoid 113  
   subdural 113  
   subgaleal 112  
 haemorrhagic shock 166–167  
 haemostasis in placental separation 171  
 HALTS mnemonic 398  
 handover 349, 397  
 head entrapment in breech birth 135  
 heart rate  
   fetal 14, 18, 40  
     bradycardia 43  
     monitoring *see* cardiotocography  
     RCOG categorization 51  
     tachycardia 43  
   maternal 62

- HELLP syndrome 304, 305  
 postpartum 310  
*see also* pre-eclampsia/eclampsia
- hemochorial placentation 5
- HEMOSTASIS algorithm 183
- hemostatic agents 187–188  
 recombinant activated factor VII 187–188  
 tranexamic acid 187
- hepatitis B 278
- hepatitis C 278
- hexaprenaline 252
- high-level investigation 356
- high neuraxial block 36
- HIV/AIDS 276–277  
 antiretroviral therapy 277  
 mode of delivery 276–277  
 untreated women 277
- human error 390–393
- hydralazine 306
- hypertension 203, 204  
 postpartum 329  
*see also* pre-eclampsia/eclampsia
- hypertonic contractions 70
- hyponatraemia 208
- hypotension  
 post-epidural analgesia 33  
 spinal 35
- hypovolaemic shock 182
- hypoxia  
 fetal 41, 44  
 and cerebral palsy 374, 375  
 gasping respiration 314, 316  
 maintenance of blood pressure 314  
 primary apnoea 313, 314, 315  
 terminal apnoea 313, 314, 315, 316  
 myometrial 67
- hypoxic-ischaemic encephalopathy 375–376
- hysterectomy  
 morbidly adherent placenta 195  
 postpartum haemorrhage 187  
 uterine rupture 297
- induction of labour (IOL) 226–239  
 definition 226  
 diabetes/gestational diabetes 235  
 failed *see* failed induction  
 indications 232, 233  
 social 237  
 intrauterine fetal death 236–237  
 IUGR 235–236  
 methods 228–232  
 mechanical 230–231  
 non-pharmacological 230–232  
 pharmacological 228–230  
 place of 233
- pre-eclampsia 235  
 prolonged pregnancy 234  
 PROM 234  
 risks 233  
 success predictors 227–228  
 body mass index 228  
 cervical changes 227  
 cervical length 228  
 position of vertex 228  
 uterine contractions 227–228
- TOLAC 285  
 membrane stripping 285  
 misoprostol 285  
 oxytocin 285  
 PGE2 285  
 trans-cervical balloon catheter 285
- uterine contractions 68
- uterine rupture 295
- vaginal birth after caesarean 236  
*see also* augmentation of labour
- INFANT study 56
- infectious diseases 276–278  
 genital herpes 278  
 hepatitis B 278  
 hepatitis C 278  
 HIV 276–277
- infective endocarditis 266
- inflation breaths 315
- innominate bones 1
- instrumental vaginal delivery 104–116  
 choice of instrument 100, 114  
 classification 104  
 complications 111–114  
 contraindications 105  
 fetal trauma 112–114  
 cephalhaematoma 112  
 intracranial trauma 113  
 nerve injury 113–114  
 scalp bruises/lacerations 112  
 subgaleal haemorrhage and cranial trauma 112
- forceps delivery 75, 105, 109–110  
 intrapartum fetal distress 81  
 prolonged second stage 99–101  
 incidence 104  
 indications 104–105  
 malposition of fetal head 110–111  
 maternal trauma 111–112  
 prerequisites 105–107  
 and shoulder dystocia 148  
 vacuum delivery 75, 107  
 cord prolapse 105  
 intrapartum fetal distress 81  
 prolonged second stage 99–101
- insulin sliding scale 272
- intentional retention of placenta 195–196
- Interceed 290
- intermittent auscultation 40–41
- internal iliac artery ligation 186
- intra-operative cell salvage 37
- intracranial trauma 113
- intrapartum care  
 NICE guidance 15, 23, 96, 173  
 risk management 346–357
- intrapartum fetal distress 74–83  
 causes 76–78  
 contractions and placental blood flow 76–77  
 cord compression 77  
 failure to progress/dystocia 77  
 maternal positioning 77  
 consequences of intervention 75  
 decision making 75  
 definitions 74  
 delivery of fetus 80–81  
 caesarean section/operative delivery 80–81  
 forceps/vacuum delivery 81  
 non-technical skills 81–82  
 sudden dramatic events 77–78  
 abruption 78  
 cord prolapse 77  
 uterine rupture 78  
 vasa praevia 77
- uterine resuscitation 78–80  
 amnioinfusion 79  
 intravenous fluids 79  
 left lateral maternal position 78  
 oxygen 80  
 stopping contractions 78  
 tocolysis 78
- intrapartum fetal monitoring 40, 56  
 cardiotocography 40  
 admission test 41  
 interpretation 43–52  
 during initial assessment 40–43  
 electronic monitoring  
 continuous 42–43  
 intermittent 41  
 intermittent auscultation 40–41  
 meconium-stained amniotic fluid 41  
 preterm labour 258
- intrapartum fever 33
- intrapartum uterine rupture 296
- intrauterine fetal death  
 induction of labour 236–237  
 TOLAC 288
- intrauterine growth restriction (IUGR) 77  
 induction of labour 235–236  
 placental insufficiency 305  
 intrauterine pressure 69  
 intravenous fluids 79  
 isoxuprine 252



## Index

- IUGR *see* intrauterine growth restriction
- Joel-Cohen method 290
- ketones 87  
 ketosis 88, 89
- Kielland's rotational forceps 100, 109, 111
- Klumpke's palsy 113, 155
- knowledge acquisition 363
- knowledge, skills and attitude 361
- knowledge-based mistakes 392
- labetalol 306
- labial lacerations 217
- labour 1, 10–11  
 diagnosis of 17  
 induction of *see* induction of labour  
 initiation of 5  
 fetal influence 5  
 maternal endocrine/genetic influence 5  
 maternal pushing 12  
 mechanism of 11–12  
 descent 11  
 engagement 11  
 expulsion 12  
 extension 11  
 external rotation (restitution) 12  
 flexion 11  
 internal rotation 11  
 normal 14  
 nutrition/hydration 84–91  
 preterm 250–262  
 primary dysfunctional 21  
 stages of *see* first stage of labour;  
 second stage of labour; third  
 stage of labour  
 support in 96  
 true vs. false 17  
 uterine activity 66  
 women's choices in 29
- labour pain 28–29  
 effects 29  
 inadequate regional anaesthesia 35–36  
 reasons for 28–29  
 relief of *see* analgesia
- lactate 52
- lactic acidosis 67
- lambdoid suture 3
- laparoscopic myomectomy 294
- laparotomy in uterine rupture 296
- lapses 391–392
- laryngeal nerve palsy 114
- leadership 362, 396–397
- learning, satisfaction in 363
- Leopold manoeuvres 6, 7  
 first 6  
 second 7  
 third 7  
 fourth 7
- levator ani 214
- levobupivacaine 86
- lie 8  
 transverse 8
- liver function tests 305
- LMWH 266, 267  
 full anticoagulation 268–269  
 metal heart valves 268–269  
 thromboembolism in current pregnancy 268  
 urgent need for delivery 269  
 prophylactic low dose  
 for recurrent miscarriage 267  
 for thrombosis prophylaxis 268  
 and regional analgesia 267  
 thrombo-prophylaxis 329
- lorazepam 275
- Lovset's manoeuvre 134
- low-carbohydrate sport drinks 88–90
- low molecular weight heparin *see* LMWH
- lower urinary tract dysfunction 330–331
- Lucas classification of urgency in caesarean section 34
- lumbar epidural *see* epidural analgesia
- McRoberts' position 151
- macrosomia 235  
 asymmetric 106  
 and induction of labour 235  
 and shoulder dystocia 148  
 TOLAC 287
- magnesium sulphate seizure prophylaxis  
 epilepsy 261–262, 275  
 pre-eclampsia/eclampsia 306–308
- malposition of fetal head 110–111
- malpresentation 95  
 malposition of fetal head 110–111  
 manual rotation 100
- Manual Ability Classification System 373
- manual rotation 100
- MAP *see* morbidly adherent placenta
- maternal  
 deterioration, early detection of 351  
 heart rate 62  
 injuries 111–112  
 medical disorders 264–278  
 Addison's disease 273  
 asthma 207, 274
- berry aneurysm/cerebral arteriovenous malformations 276
- cardiovascular disease 264–271
- cystic fibrosis 274
- diabetes mellitus *see* diabetes mellitus
- epilepsy 208, 274–275
- haemophilia/von Willebrand disease 270–271
- infectious diseases 276–278
- myasthenia gravis 275–276
- obstetric cholestasis 278
- renal disease 278
- sickle cell disease 271
- thrombocytopenia 269–270
- morbidity  
 caesarean section 124–125  
 instrumental vaginal delivery 99  
 operative delivery 99  
 post-caesarean section 124–125  
 shoulder dystocia 154  
 uterine rupture 298
- mortality, pre-eclampsia/eclampsia 303, 307
- perception of uterine contractions 62
- positioning 77  
 left lateral 78  
 second stage of labour 97  
 shoulder dystocia 153  
 umbilical cord prolapse 147
- postnatal observations 325
- pushing 12  
 second stage of labour 97
- Maternity Dashboard 354
- Mauriceau technique for breech birth 132
- Mauriceau–Smellie–Viet manoeuvre 133
- MBBRACE-UK report 390
- mean active pressure 66
- mean contraction active pressure 66
- meconium staining of amniotic fluid (MSAF) 20, 41, 321–322
- medical disorders, maternal *see* maternal, medical disorders
- membranes  
 artificial rupture *see* amniotomy  
 prelabour rupture at term (PROM) 234  
 stripping 285  
 sweeping 232
- Mendelson's syndrome 84, 89
- mental health, postpartum 332
- meperidine *see* pethidine
- mesenteric infarction 210
- metabolic disease 208
- metal heart valves 268–269

- metaraminol 35  
 methyl dopa 306  
 methylergometrine 172  
 metoclopramide 35  
 microbial invasion of amniotic cavity (MIAC) 247  
 midwife-led analgesia 30–31  
   Entonox 30  
   pethidine 30  
   relaxation techniques 30  
   TENS 30  
 mifepristone 232  
 misoprostol 172, 173  
   induction of labour 229–230  
   oral vs. vaginal 230  
   TOLAC 285  
 mistakes 391–392  
 Modified Early Obstetric Warning Score (MEOWS) 18, 309, 327, 352  
 modified Joel-Cohen caesarean section 122  
 Montevideo units 66  
 morbidity  
   maternal  
     caesarean section 124–125  
     instrumental vaginal delivery 99  
     shoulder dystocia 154  
   neonatal  
     preterm labour 250  
     shoulder dystocia 154–155  
     umbilical cord prolapse 144  
   perinatal 74  
 morbidly adherent placenta 191–198  
 antenatal care 192, 193–194  
   place of 192, 193–194  
 causes 191  
 definition 191  
 diagnosis 192–193  
 management  
   bladder/ureteric invasion 197  
   delivery 194  
   intentional retention of placenta 195–196  
   interventional radiology 197  
   peripartum hysterectomy 195  
   Triple P procedure 188, 194, 196  
   uterine conservation 195, 196–197  
 prevention/prediction 192  
 risk factors 192, 193  
 significance 191–192  
 morphine 34  
 mortality  
   maternal, pre-eclampsia/eclampsia 303, 307  
   neonatal 74  
   preterm labour 250  
   umbilical cord prolapse 144  
 motor blockade, post-epidural 33  
 moulding 3, 22  
 MSAF *see* meconium staining of amniotic fluid  
 multiple birth 135–139  
   at term 135–136  
   vaginal twin birth 100  
     analgesia 137  
     conduct of labour 137  
     fetal monitoring 137  
     first twin 138  
     inter-twin delivery interval 139  
     oxytocin augmentation 137  
     preterm breech 139  
     second twin 138–139  
     selection 136  
 myasthenia gravis 275–276  
   drug interactions 275  
   neonatal 276  
   puerperal infection 276  
 myocardial infarction 207  
 National Obstetric Anaesthesia Data (NOAD) 86  
 neonatal resuscitation 148, 312–324  
   bag/T-piece and mask ventilation 315  
   cardiac compressions 318  
   congenital malformations 322  
   cord clamping 321  
   CPAP 312, 321  
   inflation breaths 315  
   meconium-stained amniotic fluid (MSAF) 321–322  
   Newborn Life Support Algorithm (2010) 320  
   opening the airway 319  
     jaw thrust 317  
   oropharyngeal (Guedel) airway 317  
   outside hospital 322  
   PPHN 323  
   preterm infants 319–321  
   primary apnoea 313, 314, 315  
   shock 323  
   terminal apnoea 313, 314, 315, 316  
 neonate  
   feeding 326  
   maternal diabetes 273  
   morbidity  
     cerebral palsy 370–377  
     PPHN 323  
     preterm labour 250  
     shoulder dystocia 154–155  
     umbilical cord prolapse 144  
 mortality 74  
   preterm labour 250  
   umbilical cord prolapse 144  
 myasthenia gravis 276  
 operative delivery 100  
 postpartum care 325–326  
 resuscitation *see* neonatal resuscitation  
 nerve injury 113–114  
 neuraxial analgesia 32  
 neuroimaging in cerebral palsy 376  
 neurological assessment 203  
   Glasgow Coma Score 203  
 neurological conditions 208–209  
 epilepsy 208  
   posterior reversible encephalopathy syndrome (PRES) 209  
 stroke/cerebrovascular accident 209  
 Neville–Barnes forceps 109  
 Newborn Life Support Algorithm (2010) 320  
 NICE guidance  
   caesarean section 37, 124  
   decelerations 48–50  
   Entonox use 30  
   instrumental vaginal delivery 104  
   intermittent auscultation 40–41  
   intrapartum care 15, 23, 96, 173  
   second stage of labour 94  
 NICHD guidance, fetal heart rate patterns 51  
 nifedipine 253, 254, 306  
   cardiovascular actions 256  
   safety concerns 256  
 nil by mouth 84, 90  
 nitroglycerin 79  
 nitrous oxide *see* Entonox  
 non-pneumatic anti-shock garment 188  
 non-technical skills 389–399  
   cognitive components 393–396  
     decision making 395–396  
     situational awareness 350, 362, 393–395  
   coping with tiredness/fatigue 398–399  
   errors  
     human and systems 390–393  
     patient safety 389–390  
   social components 396–398  
     communication 362, 397–398  
     followership and assertiveness 397  
     leadership 362, 396–397  
     team working *see* team working  
 nuchal arms 135  
 nuclear receptor transcription factor-κB 6  
 nutrition/hydration in labour 84–91  
   accelerated starvation 87  
   general anaesthesia 85–86  
   nil by mouth 84, 90  
   obstetric considerations 85

## Index

- nutrition/hydration in labour (*cont.*)  
 oral intake 87  
 patient choice 90  
 pulmonary aspiration 84, 90  
 regional anaesthesia/analgesia 86–87  
 restricted diet 87–88  
 sport drinks 88–90, 91  
 unrestricted diet 87
- obese patients  
 difficult tracheal intubation 85  
 failed induction 228  
 shoulder dystocia 149  
 uterine contractions 67
- Objective Structured Assessment of Technical Skills *see* OSATS
- obstetric cholestasis 278
- obstetric perineal trauma 212–224  
 anal sphincter injury 112, 212  
 anatomy  
   applied 212  
   perineal 212–214  
 buttonhole tears 219  
 classification 215  
 diagnosis 216  
 episiotomy *see* episiotomy  
 first-degree tears and labial lacerations 217  
 management and repair 217  
 medico-legal considerations 222  
 postoperative care 220–221  
 prevention 223  
 second-degree tears 217–218  
 subsequent pregnancy 221–222  
 third- and fourth-degree tears 218–220  
 training 223
- Obstetric Shock Index 181–182
- obstructed labour 295
- occipital bones 3
- occipito-posterior position, persistent 95, 228
- oestrogen:progesterone ratio 5
- Ogilvie's syndrome 328
- open maternal–fetal surgery (OMFS), mid-gestation 295
- operative delivery  
 caesarean section *see* caesarean section  
 instrumental *see* instrumental vaginal delivery  
 intrapartum fetal distress 80–81  
 neonatal outcome 100  
 pelvic floor morbidity 99  
 preoperative assessment 98–99  
 preterm labour 260  
 prolonged second stage 98–101  
 opioids, intravenous 33–34  
 ORACLE trial 245
- orciprenaline 252
- oropharyngeal (Guedel) airway 317
- OSATS 379–384  
 formative assessment 381–382  
 future of 383–384  
 as part of training curriculum 379–380  
 in practice 382–383  
 requirements 380  
 summative assessment 382  
 undertaking 380
- oxygen in intrauterine resuscitation 80
- oxytocin 5  
 augmentation of labour 22, 23, 105, 106  
 dosage/time increment 25  
 second stage 97  
 TOLAC 285  
 twin birth 137  
 induction of labour 230  
 TOLAC 285  
 intraumbilical 173  
 judicious use 350–351  
 reflex release of 66  
 and uterine contractions 68  
 uterine sensitivity 68  
 uterotonic 37, 171, 173
- oxytocin receptor antagonists 254–255  
 Cochrane Systematic Review (2005) 255  
 vs. beta<sub>2</sub>-agonists 255
- pain *see* labour pain  
 pain relief *see* analgesia
- Pajot manoeuvre 110
- palpation *see* abdominal palpation
- parietal bones 3
- parity  
 and shoulder dystocia 149  
 and uterine contractions 66  
 and uterine rupture 295
- partogram 14, 16, 20, 21, 23  
 action line 15, 23, 24  
 alert line 15, 24
- parturition *see* labour
- patient safety 363, 389–390  
 designing for *see* designing for safety  
 incidents 347–349  
 learning from 356–357  
 underlying causes 349
- patient satisfaction 363–364
- patient-centred care 289
- pelvic anatomy 1–3  
 diagonal conjugate 2  
 major/minor pelvis 1  
 mid-cavity 2  
 shape 1  
 pelvic devascularization 186
- pelvic examination 8–9  
 clinical pelvimetry 8–9  
 pelvic floor morbidity 99  
 pelvic girdle pain 330  
 pelvic inlet 1  
 pelvic organ prolapse 331  
 pelvic outlet 3  
 pelvic tilt 1  
 pelvimetry 8–9  
 Pendleton's feedback rules 366  
 PerClot 196
- perinatal mortality/morbidity 74
- perineal body 214
- perineum  
 anatomy 212–214  
 anal triangle 213–214  
 levator ani 214  
 perineal body 214  
 urogenital triangle 212–213  
 postnatal examination 171  
 trauma *see* obstetric perineal trauma
- peripartum cardiomyopathy 205
- peritoneal lavage 290
- persistent pulmonary hypertension of the newborn (PPHN) 323
- pethidine 19, 30
- Pfannenstiel caesarean section 123
- phenylephrine 35
- Pierre Robin sequence 322
- placenta  
 adherent 174  
   *see also* morbidly adherent placenta  
 blood flow 76–77  
 intentional retention 195–196  
 retained 174–176  
   aetiology 174  
   management 174–176  
   manual removal 175–176  
   risk factors 174  
   special circumstances 176  
 separation 170  
   signs of 170  
   trapped 174
- placenta accreta/percreta 162, 193, 281  
 management 176  
 and prelabour caesarean section 125  
 retained placenta 174, 176
- placenta praevia 14, 158–162, 191, 281  
 diagnosis 159–161  
 clinical 159  
 screening 159–161
- fetal risks 159  
 grading 158  
 management options 161–162  
 expectant management 161  
 immediate delivery 161

- mode of delivery 161–162  
 maternal risks 158  
 and prelabour caesarean section 125  
 placental abruption 78, 162–167  
 complications 166–167  
 disseminated intravascular coagulation 167  
 haemorrhagic shock 166–167  
 postpartum haemorrhage 167  
 renal failure 167  
 diagnosis 164–165  
 clinical 164–165  
 ultrasonography 165  
 fetal risks 164  
 grading 163  
 management 165–166  
 expectant 165–166  
 immediate delivery 166  
 maternal risks 164  
 risk factors and aetiopathogenesis 163–164  
 subsequent pregnancy 167  
 uterine contractions 69  
 placentation, haemochorial 5  
 platelet count  
 pre-eclampsia/eclampsia 305  
 thrombocytopenia 269, 270  
 pneumonia 207  
 post-dural puncture headache 32  
 posterior reversible encephalopathy syndrome (PRES) 209  
 postnatal check 325  
 postpartum care 177  
 postpartum haematoma 327  
 postpartum haemorrhage 170, 180–189, 204, 327  
 cardiovascular disease 266  
 causes 181  
 complications 180  
 definition 180  
 estimation of blood loss 181–182  
 hypovolaemic shock 182  
 management 182–188  
 blood and blood products 188  
 cell salvage 188  
 compression sutures 186  
 haemostatic agents 187–188  
 HEMOSTASIS algorithm 183  
 non-pneumatic anti-shock garment 188  
 pharmacological 184–185  
 resuscitation 183–184  
 selective arterial embolization 187  
 subtotal/total abdominal hysterectomy 187  
 surgical 185  
 systematic pelvic devascularization 186  
 Triple P procedure 188  
 uterine tamponade 185–186, 266  
 pathophysiology 180  
 and placental abruption 167  
 prevention vs. treatment 177  
 risk factors 176, 177, 181  
 TOLAC 287  
 postpartum illness/collapse 200–210  
 adverse drug reactions 207–208  
 anaphylaxis 207–208  
 drug withdrawal 208  
 toxicity/side-effects 208  
 air embolus 209  
 amniotic fluid embolus 205  
 cardiac disease 206–207  
 aortic dissection 207  
 arrhythmias 207  
 myocardial infarction 207  
 causes 200, 201  
 general anaesthesia 206  
 aspiration pneumonitis 206  
 atelectasis, respiratory depression and airway obstruction 206  
 genital tract/abdominal sepsis 204  
 hypertension 204  
 incidence 200  
 management 201–204  
 assessment 202–203  
 immediate 201–202  
 resuscitation and stabilization 202  
 second stage 204  
 metabolic 208  
 neurological 208–209  
 epilepsy 208  
 posterior reversible encephalopathy syndrome 209  
 stroke/cerebrovascular accident 209  
 peripartum cardiomyopathy 205  
 postpartum haemorrhage *see* postpartum haemorrhage  
 presentation 200–201  
 regional anaesthesia 206  
 respiratory disease 207  
 asthma 207  
 pneumonia 207  
 thromboembolic disease 205  
 cerebral vein thrombosis 205  
 pulmonary embolism 205  
 vasovagal syncope 209  
 postpartum uterine rupture 296  
 PPHN *see* persistent pulmonary hypertension of the newborn  
 pPROM *see* preterm prelabour rupture of membranes  
 pre-eclampsia/eclampsia 204, 301–310  
 blood pressure measurement 304  
 classification 302  
 clinical problem 302  
 definitions 301–302  
 delivery 308–309  
 anaesthesia and fluids 309  
 gestation <34 weeks 308  
 gestation 34–37 weeks 309  
 gestation >37 weeks 309  
 management 309  
 preparation for transfer 308  
 fetal monitoring 305  
 induction of labour 235  
 initial assessment 303–304  
 maternal monitoring 304  
 maternal mortality 303, 307  
 ongoing care and discharge 310  
 postpartum care 309–310  
 fluid management 310  
 HELLP syndrome 310  
 pre-delivery care 305–307  
 antihypertensive therapy 305–307  
 fluid balance 305, 308  
 seizure control 306–308  
 thrombo-prophylaxis 308  
 presentation and diagnosis 301  
 tests  
 liver function 305  
 platelet count 305  
 urea and creatinine 304  
 uric acid 304  
 pregnancy  
 length of 5  
 uterus in 4–5  
 prelabour rupture of membranes at term (PROM) 234  
 preterm (pPROM) 242–248  
 presentation 7  
 preterm labour *see* spontaneous preterm labour  
 preterm prelabour rupture of membranes (pPROM) 242–248, 261  
 aetiology/pathophysiology 242  
 amniocentesis 246–247  
 diagnosis and initial assessment 243  
 group B *Streptococcal* colonization 246  
 management 243–246  
 antibiotic therapy 244–245  
 corticosteroids 245  
 setting 243–244  
 timing of delivery 244  
 tocolysis 245  
 primary apnoea 313, 314  
 response to birth 315  
 primary dysfunctional labour (PDL) 21  
 prioritization 335

## Index

- prolonged pregnancy  
 induction of labour 234  
 TOLAC 287  
 PROM *see* prelabour rupture of membranes, at term  
 prostaglandin synthetase inhibitors 253  
 prostaglandins 5, 60  
 effect on uterine contractions 68  
 induction of labour 228–229  
 gel vs. tablets 229  
 TOLAC 285  
 postpartum haemorrhage 185  
 uterine sensitivity 68  
 proteinuria 304  
 puerperium 325–333  
 complications 327–332  
 anaemia 332  
 anaesthesia-related 330  
 breast pain 331  
 hypertension 329  
 lower urinary tract dysfunction 330–331  
 mental health 332  
 Ogilvie's syndrome 328  
 pelvic girdle pain 330  
 pelvic organ prolapse 331  
 postpartum haematoma 327  
 postpartum haemorrhage *see* postpartum haemorrhage  
 sepsis 327–328  
 urine infection 330  
 venous thromboembolism/  
 pulmonary embolus 328–329  
 wound breakdown 331  
*see also* postpartum illness/collapse  
 emotional changes 326  
 general health 326  
 infant care 325–326  
 infant feeding 326  
 maternal observations 325  
 postnatal check 325  
 stillbirth 332–333  
 pulmonary aspiration 84, 90  
 pulmonary embolism 205, 328–329  
 pulmonary oedema, with  
 beta<sub>2</sub>-agonists 253–254  
 pulse oximetry 53  
 RADICAL framework 346, 347, 353  
 ranitidine 35  
 record keeping *see* documentation  
 red flag events 337  
 regional anaesthesia/analgesia 34  
 cardiovascular disease 266  
 complications 35–36, 206  
 high block 36  
 pain 35–36  
 follow-up 37  
 height of block 35–36  
 and LMWH therapy 267  
 lumbar 35  
 nutrition/hydration in labour 86–87  
 pre-eclampsia/eclampsia 309  
 spinal 35  
 relaxation techniques 30  
 remifentanyl 33  
 renal disease 278  
 and placental abruption 167  
 Reports into Confidential Enquiries  
 into Maternal Deaths 200, 201  
 respiratory assessment 203  
 respiratory depression 206  
 respiratory disease 207  
 asthma 207  
 pneumonia 207  
 resuscitation  
 fetal 78–80  
 maternal 183–184  
 airway/breathing 183  
 circulation 183–184  
 postpartum illness/collapse 202  
 retained placenta 174–176  
 aetiology 174  
 management 174–176  
 manual removal 175–176  
 risk factors 174  
 special circumstances 176  
 retinal haemorrhage 114  
 risk management 346–357  
 attributes of 347  
 data collection/analysis 353–356  
 designing for safety 349–351  
 early detection of deterioration 351  
 good handover practice 349  
 maintaining situational awareness 350  
 oxytocin use 350–351  
 response to cardiography 350  
 standardization of care 349  
 implementation 346–347  
 involvement of users 351–353  
 patient safety incidents 347–349  
 learning from 356–357  
 underlying causes 349  
 RADICAL framework 346, 347, 353  
 raising awareness 347–349  
 root-cause analysis 353, 356  
 Royal College of Obstetricians and Gynaecologists (RCOG) 51, 93, 98, 284, 329, 361  
 OSATS 379–380  
 Rule of 30 181–182  
 rule-based mistakes 391–392  
 Safer Childbirth 337, 338  
 sagittal suture 3  
 salbutamol 252  
 SBAR handover tool 397  
 scalp blood sampling 40, 52–53  
 Scottish Health Council 353  
 screening for placenta praevia 159–161  
 second stage of labour 1, 10  
 duration 93–94  
 nulliparous women 94  
 parous women 94  
 maternal position 97  
 prolonged 93–102  
 avoidance of 96–97  
 causes 95  
 and epidural analgesia 96  
 episiotomy 97–98  
 operative delivery 98–101  
 operative delivery vs. caesarean section 101  
 outcomes 94–95  
 phases 93  
 pushing 97  
 secondary arrest of cervical dilatation (SACD) 21  
 seizure control  
 epilepsy 275  
 pre-eclampsia/eclampsia 306–308  
 management 307–308  
 selective arterial embolization 187  
 Septrafilm adhesion barrier 291  
 sepsis 204, 327–328  
 severe 328  
 septic shock 204, 328  
 shared mental methods 362  
 SHARING handover tool 398  
 shock, post-resuscitation 323  
 shoulder dystocia 148–155  
 all-fours position 153  
 antenatal risk factors 148–149  
 gestational age 149  
 instrumental delivery 148  
 macrosomia 148  
 maternal diabetes mellitus 148  
 maternal obesity 149  
 parity 149  
 previous shoulder dystocia 148  
 calling for help 149  
 cephalic replacement and caesarean section 153  
 definition and incidence 148  
 documentation 153  
 episiotomy 151  
 internal manoeuvres 151–153  
 delivery of posterior arm 152  
 rotation 152–153  
 intrapartum risks 149  
 McRoberts' position 151

- management 149  
 maternal morbidity 154  
 neonatal morbidity 154–155  
 pathophysiology 148  
 post-birth 154  
 prediction 149  
 prevention 149  
 recognition of 149  
 statement of problem 149  
 suprapubic pressure 151  
 symphysiotomy 153  
 training 155  
 what not to do 153  
   fundal pressure 153  
   hard pulling 153  
 shoulder presentation 95  
 sickle cell disease 271  
 situational awareness 350, 362,  
 393–395  
 skills  
   acquisition 363  
   non-technical 389–399  
   OSATS 379–384  
   *see also* training  
 slips 391–392  
 Smellie's manoeuvre 135  
 spinal anaesthesia 35  
 spinal hypotension 35  
 splenic artery rupture 210  
 spontaneous preterm labour (SPTL)  
 250–262  
   antepartum glucocorticoids  
   257–258  
   contraindications to intervention  
   251  
   diagnosis 250–251  
   transvaginal ultrasound 251  
   financial cost 250  
   in utero transfer 257  
   intrapartum monitoring 258  
   at limits of viability 261  
   magnesium sulphate as  
   neuroprotective 261–262  
   mode of delivery 258–261  
   breech presentation 260  
   caesarean section vs. vaginal  
   delivery 259  
   cephalic presentation 260  
   deciding factors 259  
   'en caul' 260  
   vaginal operative delivery 260  
   mortality and morbidity 250  
   cerebral palsy 373  
   neonatal resuscitation 319–321  
   pPROM 242–248, 261  
   tocolysis *see* tocolysis; tocolytics  
   TOLAC 287  
 sport drinks 88–90, 91  
 ST analyser 53  
 staffing 336–337  
   targets 338  
 STAN machine 53  
 standardization of care 349  
 station of presenting part 9–10  
 status marmoratus 371  
 stillbirth 332–333  
 stroke/cerebrovascular accident 209  
 structured multidisciplinary inter-shift  
 handover (SMITH) protocol  
 349  
 subarachnoid haemorrhage 113  
 subdural haemorrhage 113  
 subgaleal haemorrhage 112  
 support in labour 96  
 suprapubic pressure 151  
 surfactant protein-A 5  
 sutures (of fetal skull) 3  
 sweeping of membranes 232  
 symphysis-fundal height 7  
 symphysiotomy  
   breech birth 135  
   shoulder dystocia 153  
 Syntocinon<sup>®</sup> 309  
   postpartum haemorrhage 184, 185  
   side-effects 208  
 Syntometrine<sup>®</sup> 172, 173  
   postpartum haemorrhage 185  
 systemic inflammatory response  
 syndrome (SIRS) 204  
 systems analysis 356  
 systems error 390–393  
 T-piece and mask ventilation 315  
 tachycardia 43, 203  
 tachypnoea 203  
 team working 360–367, 396  
   clinical scenarios 360  
   communication 362  
   definition 361  
   knowledge, skills and attitude 361  
   leadership 362  
   shared mental methods 362  
   situational awareness 350, 362  
   teachable behaviours 363  
   training *see* training  
 TeamSTEPPS<sup>™</sup> Teamwork Attitudes  
 Questionnaire 396  
 temporal bones 3  
 TENS *see* transcutaneous electrical  
 nerve stimulation  
 terbutaline 79, 138, 252  
 terminal apnoea 313, 314, 315, 316  
 tetanic contractions 69, 70  
 third stage of labour 1, 10, 170–177  
   caesarean section 173  
   controlled cord traction 173  
   definition 170  
   delayed cord clamping 173  
 management 171–173  
   active 171  
   errors in 177  
   expectant 171  
   TOLAC 287  
   uterotonic drugs 171–173  
 physiology 170–171  
   haemostasis 171  
   placental separation 170  
 postpartum care 177  
 postpartum haemorrhage *see*  
 postpartum haemorrhage  
 retained placenta 174–176  
 vaginal/perineal examination 171  
 thrombo-prophylaxis 308  
 thrombocytopenia 269–270  
 platelet count 269, 270  
 thromboembolic disease 205, 266  
 cerebral vein thrombosis 205  
 LMWH therapy  
   full anticoagulation 268, 269  
   prophylaxis 267, 268  
 postpartum 328–329  
*see also* pulmonary embolism  
 tiredness 398–399  
 tocography 22, 26  
   external 62–63  
   internal 63–64  
*see also* cardiotocography  
 tocolysis 78  
   cost of 256  
   drugs used *see* tocolytics  
   external cephalic version 129  
   pPROM 245  
   preterm labour 251–253  
   efficacy 253–255  
   history 252  
   maintenance therapy 253  
   myths about 252–253  
   twin birth 138  
 tocolytics  
   beta<sub>2</sub>-agonists 253  
   calcium channel blockers 254  
   choice of 256–257  
   oxytocin receptor antagonists  
   254–255  
   prostaglandin synthetase inhibitors  
   253  
   safety 255–256  
 tokophobia 112  
 TOLAC 252  
   contraindications 280–281  
   fetal/neonatal benefits/risks 282  
   labour management 284–285  
   analgesia/anaesthesia 284–285  
   induction and augmentation 285  
   monitoring 286–287  
   setting 284  
   third stage 287



## Index

- TOLAC (*cont.*)  
 uterine rupture 286  
 maternal benefits/risks 281–282  
 long-term 278  
 short-term 281  
 midwifery practice 288–289  
 hospital-based 289  
 out-of-hospital 289  
 risk stratification 289  
 special situations 287–288  
 breech 287  
 fetal macrosomia 287  
 intrauterine death 288  
 preterm labour 287  
 previous low vertical incision 288  
 prolonged pregnancy 287  
 termination of pregnancy 288  
 twin 287  
 two previous caesarean sections 288  
 unknown type of previous uterine incision 288  
 success-related factors 282–283  
 unconventional 289–290  
 vs. ERCD 281–282
- training  
 additional in-house 366  
 frequency 366  
 organization 364–366  
 access 364  
 course planning and administration 364  
 equipment 365  
 facilitation 365  
 lessons 364  
 location 364  
 objectives, feedback and assessment 365–366  
 patient-actors 365  
 record keeping 365  
 scenarios 365  
 skills and drills 364–366
- OSATS *see* OSATS  
 reasons for 363  
 changing attitudes 363  
 clinical behaviours 363  
 cost-effectiveness 364  
 knowledge/skills acquisition 363  
 patient and organizational outcomes 363–364  
 satisfaction of learners 363
- scenarios  
 obstetric perineal trauma 223  
 shoulder dystocia 155
- tranexamic acid 187  
 trans-cervical balloon catheter 285  
 transcutaneous electrical nerve stimulation (TENS) 19, 30  
 transvaginal ultrasound in preterm labour 251
- transverse lie 8  
 trapped placenta 174  
 traumatic uterine rupture 295
- triage 335–344  
 ABC assessment 335  
 clinical scenarios 340–344  
 general principles 339–341  
 guide 339  
 obstetric 335–336  
 prioritization 335  
 red flag events 337  
 space 337–338  
 staffing 336–337  
 targets 338  
 workload 338–339
- trial of labour after caesarean *see* TOLAC
- Triple P procedure 188, 194, 196
- twin birth 136–139  
 analgesia 137  
 conduct of labour 137  
 fetal monitoring 137  
 first twin 138  
 inter-twin delivery interval 139  
 oxytocin augmentation 137  
 preterm breech 139  
 second twin 138  
 cephalic 138  
 non-cephalic 138–139  
 selection 136  
 TOLAC 287
- ultrasound  
 cervical length 228  
 placental abruption 165  
 transvaginal in preterm labour 251
- umbilical cord  
 clamping  
 delayed 173  
 timing of 321  
 controlled traction 173  
 presentation 95
- umbilical cord compression 77  
 reduction of 146–147  
 bladder filling 147  
 digital elevation 147  
 maternal positioning 147
- umbilical cord prolapse 77, 144–148  
 calling for help 146  
 definition 144  
 delivery 147–148  
 documentation 148  
 fetal monitoring 147  
 incidence and risk factors 144–145  
 management 146  
 neonatal morbidity/mortality 144  
 neonatal resuscitation 148  
 pathophysiology 144  
 prediction 145
- preparation for immediate delivery 146, 147  
 prevention 145  
 recognition of 146  
 reduction of compression 146–147  
 bladder filling 147  
 digital elevation 147  
 maternal positioning 147  
 vacuum delivery 105
- umbilical venous catheter 318  
 upper cervical spinal cord injury 114  
 urea 304  
 ureteric invasion in MAP 197  
 uric acid 304  
 urinary incontinence, postpartum 330–331
- urine infection 330
- urogenital triangle 212–213
- uterine activity integral 66
- uterine activity units 66
- uterine contractions 60–71  
 assessment 26, 61–64  
 electromyography 64  
 external tocography 62–63  
 internal tocography 63–64  
 manual palpation 62  
 maternal perception 62
- definitions 61  
 hypertonic 70  
 in-coordinate 23, 24, 69  
 induced labour 68, 227–228  
 material characteristics affecting 67  
 measurement 26, 65–66  
 units 66
- normal labour 66  
 optimal 25–26  
 and parity 66  
 physiological basis 60–61  
 placental abruption 69  
 and placental blood flow 76–77  
 and previous caesarean section 67–68  
 quantification 64–65  
 elements of 65  
 stopping 78  
 tetanic 69, 70
- uterine packing 185
- uterine resuscitation 78–80  
 amnioinfusion 79  
 intravenous fluids 79  
 left lateral maternal position 78  
 oxygen 80  
 stopping contractions 78  
 tocolysis 78
- uterine rupture 78, 293–299  
 aetiology  
 congenital uterine malformations 295  
 connective tissue disorders 295  
 induction of labour 295

- obstructed labour 295  
 previous caesarean section 123, 293–294  
 previous uterine surgery 294–295  
 trauma 295  
 antepartum 296  
 classification and risk factors 293  
 clinical features 295–296  
 complications 298–299  
   maternal 298  
   perinatal 298  
 diagnosis 297  
 differential diagnosis 298  
 epidemiology 293  
 intrapartum 296  
 laparotomy 296  
 management 297–298  
 mechanisms 295  
 postpartum 296  
 reproductive outcome 299  
 TOLAC 286  
   consequences 286  
   diagnosis 286  
   predictive factors 286
- uterine tamponade 185–186, 266  
 uteroplacental circulation 5  
 uterotonic drugs 171–173  
   *see also* oxytocin  
 uterus  
   congenital malformations 295  
   pregnant 4–5  
     contractility 5  
     dextrorotation 4  
     shape and position 4–5  
     size 4  
     vascular adaptations 5  
   *see also entries beginning with uterine*
- vacuum delivery 75, 107, 123  
   choice of 100  
   cord prolapse 105  
   intrapartum fetal distress 81  
   prolonged second stage 99–101  
 vaginal birth after caesarean (VBAC),  
   induction of labour 236  
 vaginal breech birth 130–133  
   assisted 132–133
- conduct of 131–132  
   Mauriceau technique 132  
 contraindications 130  
 selection for 130–131  
 vaginal examination 19  
   postnatal examination 171  
 vaginal operative delivery *see* operative delivery  
 vasa praevia 77, 162  
 vasovagal syncope 209  
 ventouse delivery *see* vacuum delivery  
 violations 392  
   *see also* errors  
 von Willebrand disease 270–271  
   delivery 270–271  
   postnatal period 271  
   treatment 270
- warfarin 269  
   thromboembolic disease 329  
 Wharton's jelly 77  
 workload 338–339  
 wound breakdown 331  
 Wrigley's forceps 109