

# Molecular characterization of root-lesion nematode, *Pratylenchus* species, and their prevalence in New Zealand maize fields

Nagarathnam Thiruchchelvan<sup>1,2,\*</sup>, Manjula Kularathna<sup>1</sup>, Romy Moukarzel<sup>1</sup>, Seona Casonato<sup>1,3</sup>, Leo M. Condrón<sup>4</sup>

<sup>1</sup>Department of Pest Management and Conservation, Faculty of Agriculture and Life Sciences, Lincoln University, Lincoln 7647, New Zealand

<sup>2</sup>Department of Agricultural Biology, Faculty of Agriculture, University of Jaffna, Ariviyal Nagar, Kilinochchi 44000, Sri Lanka

<sup>3</sup>Sugar Research Australia, 216 Dallachy Road, Tully, Queensland 4854, Australia

<sup>4</sup>Department of Soil and Physical Science, Faculty of Agriculture and Life Sciences, Lincoln University, Lincoln 7647, New Zealand

\*Corresponding author. Department of Pest Management and Conservation, Faculty of Agriculture and Life Sciences, Lincoln University, Lincoln 7647, New Zealand. E-mail: [thiru@lincolnuni.ac.nz](mailto:thiru@lincolnuni.ac.nz); Department of Agricultural Biology, Faculty of Agriculture, University of Jaffna, Ariviyal Nagar, Kilinochchi 44000, Sri Lanka. E-mail: [thiruchchelvann@univ.jfn.ac.lk](mailto:thiruchchelvann@univ.jfn.ac.lk)

## Abstract

Root-lesion nematodes (*Pratylenchus* spp.) are significant plant parasites, causing substantial crop damage worldwide. This study aimed to characterize *Pratylenchus* spp. in New Zealand maize fields using molecular techniques and map their prevalence. Soil sampling from 24 maize fields across the North and South Islands provided 381 composite samples. Root-lesion nematodes were extracted using the sieving-centrifugal-sugar flotation method and differentiated into five morphospecies. Molecular characterization involved direct partial sequencing of the D2/D3 28S rDNA, ITS rDNA, and COX1 mtDNA regions using Sanger technology from a single nematode. Five *Pratylenchus* species were identified: *P. neglectus*, *P. crenatus*, *P. thornei*, *P. penetrans*, and *P. pratensis*, confirmed by phylogenetic analysis. Prevalence mapping showed *P. neglectus* and *P. crenatus* in all sampled fields, while *P. thornei*, *P. penetrans*, and *P. pratensis* were more localized. This study is the first to report these *Pratylenchus* species on maize in New Zealand and provides the first partial sequences of the D2/D3, COX1, and ITS regions for these species on maize in New Zealand. The findings highlight the diversity of *Pratylenchus* populations in New Zealand maize fields and emphasize the need for region-specific management strategies to mitigate crop damage.

## Impact Statement

This is the first comprehensive study to investigate the prevalence and identification of *Pratylenchus* spp. in New Zealand, using molecular characterization techniques. Despite reports of seven *Pratylenchus* spp. in various crops, no studies in New Zealand have used a molecular approach for its identification. Additionally, *Pratylenchus* spp. association in maize have not been examined. This study provides information for future research exploring the impact of *Pratylenchus* spp. on the production and sustainability of maize and offers information for future nematode management strategies.

**Keywords:** prevalence; maize; molecular identification; PCR; phylogenetic tree; *Pratylenchus*; root-lesion nematode; sanger sequencing

## Introduction

Root-lesion nematodes, belonging to the genus *Pratylenchus* Filipjev 1936, are recognized as important plant-parasitic nematodes (PPN) worldwide, causing considerable damage up to 20%–50% in cereal crops, including wheat and maize (Thompson et al. 2008, Thompson et al. 2009). *Pratylenchus* spp. has a wide host range, including vegetables, beans, tubers, and orchard crops (Castillo and Vovlas 2007, Chowdhury et al. 2022). The *Pratylenchus* genus comprises over 100 species, with *P. neglectus* being the most distributed and economically damaging species (Castillo and Vovlas 2007, Kumari 2015). *Pratylenchus* spp. are migratory endoparasites that cause the third most destruction of crops after root-knot and cyst nematodes. *Pratylenchus* spp. occur in a wide range of climate zones, including tropical, subtropical, and temperate environments (Castillo and Vovlas 2007, Jones et al. 2013, Divsalar et al. 2018). The negative impact of *P. neglectus* (Rensch 1924) Filipjev and Schuurmans Stekhoven 1941, *P. pene-*

*trans* (Cobb 1917) Filipjev and Schuurmans Stekhoven 1941, and *P. thornei* Sher and Allen 1953 was documented in many regions such as in Australia, the USA, Africa, and Asia (Riga et al. 2008, Yan et al. 2008, Thompson et al. 2016). Recent studies have described several new *Pratylenchus* species, highlighting the ongoing progression of identifying their diversity. For example, researchers identified *P. haiduongensis* in Vietnam (Nguyen et al. 2017), *P. rwandae* in Rwanda (Singh et al. 2018), and *P. dakotaensis* in the USA (Handoo et al. 2021).

*Pratylenchus* spp. host selectivity and severity vary depending on the species present (Castillo and Vovlas 2007). Therefore, it requires the right identification methods for precise identification to species level, which is crucial for managing nematodes. Morphological variations among *Pratylenchus* species have been well-documented within and between species (Handoo and Golden 1989, Castillo and Vovlas 2007). Morphological identification can be difficult and time-consuming for this genus (Kumari 2015). Additionally, mor-

Received 14 August 2024; revised 8 December 2024; accepted 20 December 2024

© The Author(s) 2024. Published by Oxford University Press on behalf of Applied Microbiology International. This is an Open Access article distributed under the terms of the Creative Commons Attribution License (<https://creativecommons.org/licenses/by/4.0/>), which permits unrestricted reuse, distribution, and reproduction in any medium, provided the original work is properly cited.

phological attributes may also be altered due to variations in geographical location, host plant, nutrition, and other environmental factors (Bogale *et al.* 2020).

The taxonomy of the genus has been a subject of ongoing research and there are pitfalls in *Pratylenchus* species-level identification reported (Janssen *et al.* 2017b). However, Janssen *et al.* (2017b) reported that *Pratylenchus* species identification based solely on morphology is inconclusive for this genus. Additionally, having a multi-gene phylogeny of using nuclear ribosomal and mitochondrial gene sequences can provide reliable identification of the species belonging to this genus (Kumari 2015, Bogale *et al.* 2020, Handoo *et al.* 2021). The use of both morphological and molecular techniques has become essential for the accurate identification of species in the *Pratylenchus* genus (Subbotin *et al.* 2008, Divsalar *et al.* 2018, Nguyen *et al.* 2023). Most studies indicated that morphological identification coupled with sequencing of two or more genes' regions could be reliable, particularly for the *Pratylenchus* species (Janssen *et al.* 2017a, Handoo *et al.* 2021).

Previous studies have shown that DNA sequencing, especially the 28S D2/D3 rDNA, ITS, and COI (COX1) mtDNA fragments, is effective for characterizing *Pratylenchus* populations and conducting phylogenetic analyses (Subbotin *et al.* 2008, Kumari 2015, Janssen *et al.* 2017a,b, Handoo *et al.* 2021). Therefore, *Pratylenchus* species in this study were identified by amplifying three gene regions: COX1 mtDNA, LSU D2/D3 28S rDNA, and ITS rDNA, and were compared with the morphological characters reported. Recent surveys in New Zealand indicate a higher abundance of *Pratylenchus* spp. in maize and wheat fields; however, these surveys lack a detailed characterization of these nematodes (Thiellier and Kularathna 2023, Thiruchelvan *et al.* 2023). Therefore, the present study aimed to (1) characterize the *Pratylenchus* spp. based on the molecular analysis and (2) map the species prevalence in New Zealand maize.

## Materials and methods

### Soil sampling and extraction of *Pratylenchus* species

During June–November 2022, soil sampling was conducted in maize-growing regions of New Zealand. A total of 381 composite soil samples were collected from 24 fields across three regions including Canterbury (South Island), Waikato, and Manawatu-Whanganui (North Island). Fields were divided into 2 or 3 blocks (>5 ha 3 blocks) based on size, with 10–25 samples per field collected in a double or triple zigzag pattern. At each sampling point, 15 soil cores (30 cm deep, 2 cm diameter) were taken using a soil sampler (OAK-FIELD Apparatus, USA) within a 4 m radius, averaging 750 g of soil per sample. From these, 24 composite samples were created for *Pratylenchus* spp. extraction by mixing ~75–100 g subsamples from each field sample, resulting in ~1–2 kg of composite soil per field. The sieving-centrifugal-sugar flotation method (Jenkins 1964) was used for nematode extraction. A 100 g of soil was mixed with 1 l of tap water. The soil was settled, and the supernatant was passed through nested sieves (150- $\mu$ m and 38- $\mu$ m apertures, Glenammer, UK). The process was repeated thrice, and the soil from the 38- $\mu$ m sieve was centrifuged at 576 g for 5 minutes. The supernatant was discarded, and the pellet was

mixed with 45% (w/v) sucrose solution before being centrifuged for 1 minute at 576 g. The supernatant was then sieved (38- $\mu$ m aperture), washed, and the nematodes were collected into 50 ml specimen bottles. The samples were stored at 4°C for morphological identification (Kularathna *et al.* 2019).

### Morphospecies differentiation

*Pratylenchus* spp. were identified to genus level based on morphological characteristics such as head shape, stylet and stylet knob shape, pharynx, gland lobe length, female tail terminus, and position of vulva (V-value) (Fortuner 1988, Handoo and Golden 1989, Mai *et al.* 1996). Nematodes were heat-killed on a glass slide, observed at 40 $\times$ , 100 $\times$ , and/or 600 $\times$  magnification using an inverted compound light microscope (Olympus-CKX53, Japan). Morphometric measurements were recorded for females and available males using the Olympus cellSens Entry system as per De Man Formulae (Nemaplex 2019). Five morphospecies were differentiated with observed morphological characteristics as shown in Figs 1, 2, and Table 1. Each morphospecies was identified at the species level using the molecular analysis described below.

### Molecular identification: DNA extraction, PCR, and phylogenetic analysis

Genomic DNA was extracted from individual nematodes using the worm lysis buffer method (Chowdhury *et al.* 2020, Handoo *et al.* 2021). Female nematodes were initially washed in double distilled water (ddH<sub>2</sub>O) on a glass slide, followed by surface sterilization in 1% NaOCl, and then subjected to three additional washes with ddH<sub>2</sub>O. The sterilized nematodes were chopped in a cavity slide with a sterile surgical blade and transferred to a centrifuge tube containing worm lysis buffer (2  $\mu$ l Proteinase K enzyme (600  $\mu$ g ml<sup>-1</sup>), 2  $\mu$ l PCR buffer with MgCl<sub>2</sub> (10 $\times$ ), and 6  $\mu$ l Millipore water). The tubes were incubated at -20°C for 30 minutes, followed by 65°C for 1 hour and 95°C for 10 minutes to terminate the reaction. The extracted DNA was either used immediately for PCR or stored at -20°C (Huang and Yan 2017).

PCR amplification targeted D2/D3 fragments of 28S rDNA, ITS rDNA, and COX1 gene from mtDNA (Handoo *et al.* 2021) using primers D2A/D3B, ITS5/ITS4, and JB3/JB4.5 (Supplementary Table S1). Reactions were carried out in 20  $\mu$ l volumes, consisting of 2  $\mu$ l DNA template, 1  $\mu$ l each of forward and reverse primers (10  $\mu$ mol l<sup>-1</sup>), 10  $\mu$ l Dream-Taq Green PCR Master Mix (2 $\times$ ), and 6  $\mu$ l Millipore water. Thermocycling conditions were as follows: for D2A/D3B and ITS5/ITS4 primers, initial denaturing at 95°C for 3 minutes, followed by 30 cycles of 95°C for 30 seconds, annealing at 52°C (D2A/D3B) or 55°C (ITS4/ITS5) for 30 seconds, and extension at 72°C for 1 minute, with a final extension at 72°C for 10 minutes (Subbotin *et al.* 2006). For the COX1 primers JB3/JB4.5, conditions included an initial denaturation at 95°C for 5 minutes, followed by 5 cycles of 95°C for 30 seconds, 54°C decreasing by 1°C per cycle for 30 seconds, 72°C for 30 seconds, and 35 cycles of 95°C for 30 seconds, 50°C for 30 seconds, and 72°C for 30 seconds, with a final extension at 72°C for 10 minutes (Bowles *et al.* 1992, Derycke *et al.* 2010). PCR products were confirmed by electrophoresis on a 1% agarose gel stained with GelRed, visualized, using the Gel-Doc Go imaging system (Bio-Rad). The amplified DNA was sequenced at the Lincoln University sequencing facility using

Sanger dideoxy sequencing technology (Applied Biosystems, HITACHI, 3500 XL, Genetic Analyzer, New Zealand).

Consensus sequences were generated using forward and reverse sequences in Geneious Prime 2023.2.1. Sequences were deposited in GenBank if they had over 98% similarity and 90% query coverage during blasting. Phylogenetic trees were constructed using Bayesian inference with MAFFT multiple sequence alignment (Kato and Standley 2013) and MrBayes v.3.2.6 (Ronquist et al. 2012), selecting the GTR + G model for COX1 and ITS and GTR + G + I model for LSU D2/D3 sequences based on jModelTest (Posada 2008, Darriba et al. 2012). Bayesian analysis involved 4 Markov chains for 10<sup>6</sup> generations, sampling every 200 generations, with burn-in samples discarded to generate a 50% majority rule consensus tree (Xia et al. 2021).

### Prevalence of *Pratylenchus* sp. in New Zealand maize fields

The prevalence of the five different species of *Pratylenchus* sp. in the presence or absence data matrix was mapped using ArcGIS (ArcMap) 10.8.1 software.

## Results and discussion

### Molecular identification and phylogenetic analysis

This study focused on the molecular identification of five morphospecies belonging to the *Pratylenchus* genus collected from New Zealand maize fields and was complemented by some morphological observations. Using the LSU and COX1 gene regions, the molecular data strongly supported the identification of *Pratylenchus neglectus*, *P. crenatus* Loof (1960), *P. thornei*, and *P. penetrans*. The identified *Pratylenchus* morphospecies showed sequence similarities ranging from 98% to 100% when compared to species in the NCBI database. The D2/D3 sequences for all five species showed 98%–100% similarity, while the COX1 sequences for four species exhibited 99%–100% similarity. The COX1 region of *P. pratensis* was not successfully amplified, and ITS fragment amplifications were only successful for *P. thornei*, *P. neglectus*, and *P. pratensis* De Man 1880. The poor-quality sequences obtained for *P. penetrans* and *P. crenatus* in the ITS region may be attributed to several factors. One possible reason is the lack of primer specificity, as the primers used may not have been sufficiently optimized for these nematode species (Blok and Powers 2009). Additionally, background noise or contamination could have contributed to the poor-quality sequences, potentially due to the co-amplification of non-target DNA, as reported by De Ley et al. (2002).

The best sequence match for each identified species is detailed in Supplementary Table S2, while the deposited sequences in GenBank, along with the generated accession numbers, are listed in Supplementary Table S3. Phylogenetic trees generated from LSU D2/D3 28S rDNA (Fig. 3) include 70 ingroups and an outgroup taxon; the ITS rDNA tree (Supplementary Fig. S1) includes 24 ingroups and an outgroup taxon; and the COX1 mtDNA tree (Fig. 4) comprises 72 ingroups and an outgroup taxon. All three trees indicate that the newly identified *Pratylenchus* species are distinct from one another, each forming 100% supported clades with the respective species already available in the database.

The amplification success and sequence similarities observed in this study are consistent with findings from other

nematode research, where the D2/D3 28S rDNA and COX1 mtDNA regions are commonly used for species identification and phylogenetic analysis (Holterman et al. 2009, Janssen et al. 2017a,b, Handoo et al. 2021). However, the ITS region has been reported to be more variable, with amplification success often depending on the species and the quality of the extracted DNA (Powers et al. 2011). In comparison, other studies using different primers or alternative regions, such as 18S rDNA, have reported varying degrees of success in amplifying ITS regions (Subbotin et al. 2001, Subbotin et al. 2023).

Some minor morphometric deviations were observed compared to type populations, highlighting the potential influence of geographic and environmental factors on nematode morphology (Bogale et al. 2020). Morphospecies 1 (*P. neglectus*): molecular analysis confirmed the identity of *P. neglectus*. Morphologically, the New Zealand population exhibited minor variations in body length and tail shape, but these differences fall within the expected range for this species (Supplementary Table S4). Similar to the findings of Handoo and Golden (1989) and Xia et al. (2021), these minor deviations suggest that environmental conditions or local adaptation may influence certain morphological traits (Bogale et al. 2020). Morphospecies 2 (*P. crenatus*): the molecular data matched with *P. crenatus* sequences in the NCBI database; however, minor morphometric discrepancies were noted, particularly in stylet length (Supplementary Table S5). The New Zealand population showed slightly longer stylets (17.1–18.7 µm) compared to previous reports, such as Kumari (2015) (13–15 µm) but aligned with Loof (1960) (14–18 µm). These differences could be due to natural variability within the species or local adaptations in New Zealand's environmental conditions as reported by Bogale et al. (2020). Morphospecies 3 (*P. thornei*): molecular identification of *P. thornei* was confirmed by the gene sequencing. While most morphological traits aligned with known descriptions (Handoo and Golden 1989, Movahedifar and Azimi 2020), slight differences in stylet length were observed. These minor discrepancies are not uncommon and have been previously noted in studies of global populations (Fayazi et al. 2012) (Supplementary Table S6). The observed variations may be influenced by factors such as sampling location, host plant differences, or local environmental conditions as suggested by Fayazi et al. (2012). Morphospecies 4 (*P. penetrans*): both molecular and morphological data confirmed the identification of *P. penetrans* in the New Zealand populations. The morphometric traits were consistent with previous descriptions (Bogale et al. 2021, Gil et al. 2021). Although slight variations in stylet length were recorded in the New Zealand populations, these differences are within an acceptable range and are not expected to impact species identification (Supplementary Tables S7 and S8).

Morphospecies 5 (*P. pratensis*): The population of *P. pratensis* described in this study shares several key morphological and molecular features with the populations reported by Janssen et al. (2017a) (Supplementary Tables S9 and S10). Morphometrically, the individuals in our study exhibit a body length of 458–556 µm in females and 469–512.9 µm in males, with lip regions containing three annules and well-separated basal knobs on a robust stylet. The vulva in females is located at 77.6%–80.9% of the body length, and the tail tips are symmetrically conoid, with lengths ranging from 20 to 26.6 µm. Males have spicules that are curved, measuring 14.4–19.3 µm in length, with a bursa enveloping the tail. However, a slight



**Figure 1.** Photomicrographs of the *Pratylenchus* spp. identified in New Zealand maize fields; (A) heat-killed female of morphospecies 1 (slightly ventrally curved); (B) heat-killed female of morphospecies 2 (almost straight); (C) live female of morphospecies 3 (heat-killed females are C shape); (D) heat-killed female of morphospecies 4 (moderately slender, or straight); (E) heat-killed male of morphospecies 4 (moderately slender, or straight); (F) heat-killed female of morphospecies 5 (almost straight); and (G) heat-killed male of morphospecies 5 (almost straight) (scale bars = 100  $\mu\text{m}$ ).

**Table 1.** Morphological characteristics used for the differentiation of morphospecies of the *Pratylenchus* spp. in New Zealand maize fields.

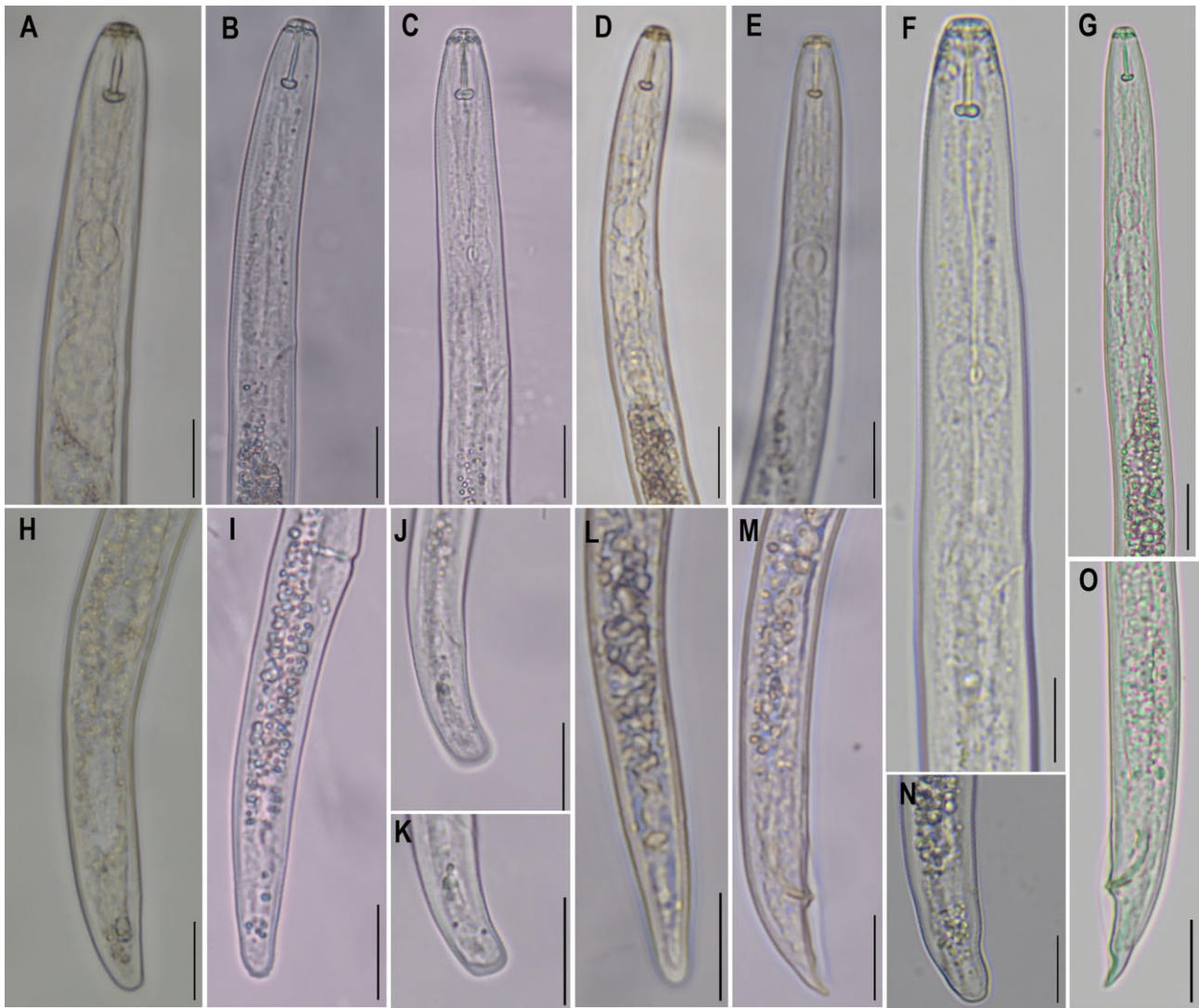
Characteristics	Morphospecies 1	Morphospecies 2	Morphospecies 3	Morphospecies 4	Morphospecies 5
<i>n</i>	10	10	7	9	8
Body length ( $\mu\text{m}$ )	474.0 (402.4–556.4)	454.0 (382.8–514.9)	526.1 (503.6–548.9)	417.4 (393.8–435.4)	531.2 (458.8–556.4)
a (L/W)	23.8 (19.7–28.8)	24.7 (21.6–27.7)	26.6 (25.2–28.4)	23.6 (19.9–25)	25.2 (22–29)
b (L/I)	4.3 (3.5–4.9)	4.3 (3.7–4.6)	4.7 (4.7–4.8)	4.2 (3.9–4.5)	4.3 (3.5–5.2)
c (L/T)	19.7 (16.7–22.1)	20.7 (19–22.2)	20.5 (19.3–21.7)	16.6 (13.6–20.8)	22.3 (20.1–25.5)
c' (T/ABD)	1.9 (1.4–2.5)	2.0 (1.7–2.3)	2.3 (2.2–2.5)	2.3 (1.8–2.8)	1.9 (1.3–2.4)
V% (V/L *100)	79.8 (72–82.6)	81.2 (76.6–83.5)	76.4 (75.6–77.4)	78.2 (76.4–80)	79.1 (77.6–80.9)
Stylet ( $\mu\text{m}$ )	17.6 (15.8–19.7)	17.7 (17.1–18.7)	18.6 (18–19.2)	16.6 (15.7–17.5)	17.8 (16.2–19.9)
Heat-killed female	Slightly ventrally curved or straight	Moderately ventrally curved or straight	C-shaped curved	Moderately slender, or straight	Almost straight
Lip annuli	Two	Three	Three	Three	Three
Stylet knob	Rounded, anteriorly intended	Rounded	Broadly rounded, anteriorly flattened	Broadly rounded	Well-separated
Tail terminus	Round, no annulation	Crenate with annulation	Truncated, phasmid in mid tails	Rounded with a smooth tip	Symmetrically conoid
Males	Absence	Absence	Absence	Presence	Presence
Spicule	-	-	-	16.5–16.9	14.4–19.3

*n*- number of nematodes measured; L- body length, W- maximum body diameter; I- intestine length from the anterior end; T-tail length; ABD- body diameter at anus; V- distance to vulva from the anterior end

variation is observed in the stylet length of the specimens examined. The stylet length in females from New Zealand population ranges from 16 to 19.9  $\mu\text{m}$ , and in males, it ranges from 15.8 to 17.1  $\mu\text{m}$ . This contrasts with the type locality of *P. pratensis* in The Netherlands, where the stylet length is consistently 14–15  $\mu\text{m}$  (Loof 1974 in CIH Descriptions of PPNs, 4, # 52). The stylet length in *Pratylenchus* species has been noted as a stable morphological character (Roman and Hirschmann 1969, Janssen *et al.* 2017a). The larger stylet measurements observed in the New Zealand specimens, therefore, are unlikely to be the result of environmental variability. This suggests that the population may represent a distinct morphological variant within the known species boundaries. Given that

species such as *P. penetrans* and *P. pratensis* are currently regarded as species complexes, it is probable that the specimens encountered in this study belong to cryptic species within these complexes. These differences in stylet length, along with variations in tail morphology, suggest that while the population in our study falls within the *P. pratensis* species complex, it may represent a distinct taxon within this group. Future studies need to be done to clarify this issue.

Additionally, the ecological context of the populations described in this study differs from that of the original type locality of *P. pratensis*, which is typically found in moist meadows or swampy areas of Europe (Loof 1960). In contrast, the specimens examined in this study were collected from



**Figure 2.** Photomicrographs of the *Pratylenchus* spp. identified in New Zealand maize fields; A-anterior part (rounded stylet knobs indented on the anterior surfaces), H-posterior part (rounded tail terminus has no annulation) of morphospecies 1 female; B-anterior part (rounded stylet knobs), I-posterior part (crenated tail terminus with annulation) of morphospecies 2 female; C-anterior part (broadly rounded almost anteriorly flattened basal knob), J, K-posterior part (slightly conical towards the end and truncated terminus). A phasmid in mid-tail of morphospecies 3 female; D-anterior part (basal knob broadly rounded), L-posterior part (tail is a long-rounded shape with a smooth tip) of morphospecies 4 (female); E-anterior part (basal knob broadly rounded), M-posterior part (with bursa irregularly crenate and enveloping tail tip) of morphospecies 4 male; F-anterior part (well-separated basal knobs), N-posterior part (symmetrically conoid tail terminus) of morphospecies 5 female; and G-anterior part (well-separated basal knobs.), O-posterior part (bursa enveloping the tail) of morphospecies 5 male (scale bars = 20  $\mu$ m).

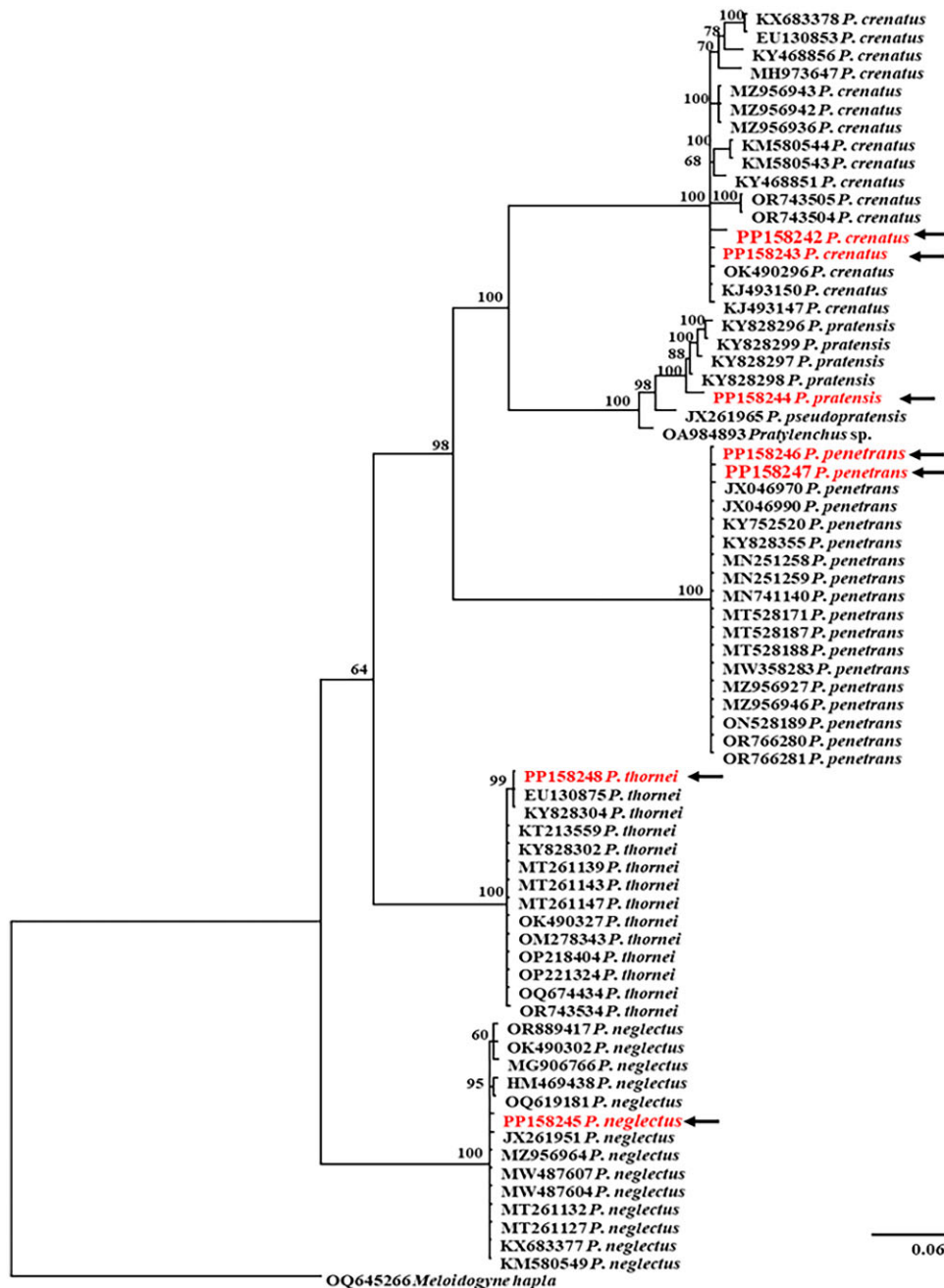
cultivated maize fields, suggesting potential ecological divergence. Given the rarity of *P. pratensis* in Europe and Asia and its typical association with wild grasses in natural environments, the population described here might be more closely related to or represent another species within the *P. pratensis* complex.

The molecular evidence from the LSU (Fig. 3) and ITS gene (Supplementary Fig. S1) regions shows a close relationship with *P. pratensis* populations, but the subtle morphological differences, particularly in stylet length and tail shape, could reflect intraspecific variation or, alternatively, indicate that this population belongs to a yet undescribed species within the *Pratensis* group. Further investigations, including more extensive molecular and morphological analyses, would be necessary to clarify the taxonomic status of this population and

to determine whether it represents a new species within the *Pratylenchus* genus.

#### Prevalence of *Pratylenchus* species in New Zealand maize

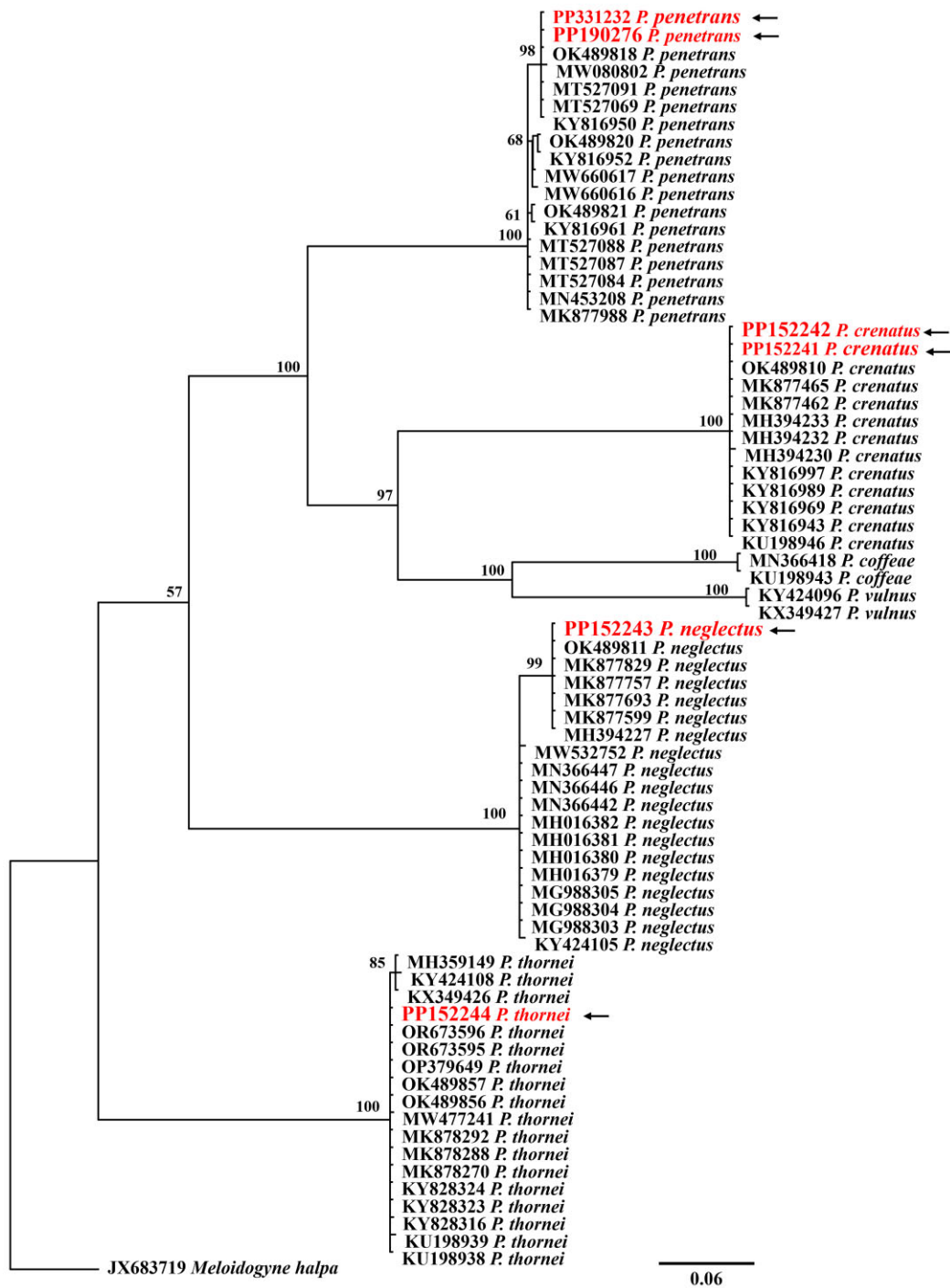
The prevalence of *Pratylenchus* spp. across sampled maize fields in New Zealand revealed differences in prevalence (Fig. 5). *Pratylenchus neglectus* and *P. crenatus* were the most widely distributed species (Fig. 5A). Conversely, *P. thornei* and *P. pratensis* were found in the Canterbury region, while *P. penetrans* was detected only in the Waikato region. In this study, the prevalence of *Pratylenchus* species could be influenced by soil types and cropping history. *Pratylenchus thornei* was detected in three locations, characterized by loamy soils but different soil orders. In Lincoln, with Pallic (40%) and



**Figure 3.** Bayesian tree inferred of *Pratylenchus* sequences LSU D2/D3 fragment of 28S rDNA under GTR + G + I model. The posterior probabilities of >50% are given in appropriate clades. Newly obtained sequences from New Zealand maize fields are indicated with arrows.

Recent (60%) soils, continuous maize cropping likely contributed to its persistence. In Darfield, where Pallic soils are dominant with stony loamy textures, *P. thornei* was found after maize cropping, followed by oat seedlings. In Lesston, where Pallic (75%) and Gley (25%) soils with loamy-clay textures are present, *P. thornei* thrived, particularly with crop rotations like maize and winter oats. In Dorie, *P. pratensis* was found in loamy Pallic soil, highlighting its adaptability to maize fields, especially after grass. Although less studied, its presence in loamy soils aligns with known patterns of nematode distribution. *Pratylenchus penetrans* was observed

in Cambridge, Matamata, and Otorohanga, areas with allophanic soils and continuous maize cropping, which likely supported its establishment. However, *P. crenatus* and *P. neglectus* prevailed in all fields that were sampled, except in Tahuna, where the organic soil order (peat soil) is present and no *Pratylenchus* was detected. The absence of root sampling in this study limits the understanding of *Pratylenchus* species in the root systems of maize. Future studies should include root data, alongside soil samples, for a more comprehensive understanding of their distribution. The co-occurrence of species and their abundance were not detailed but iden-



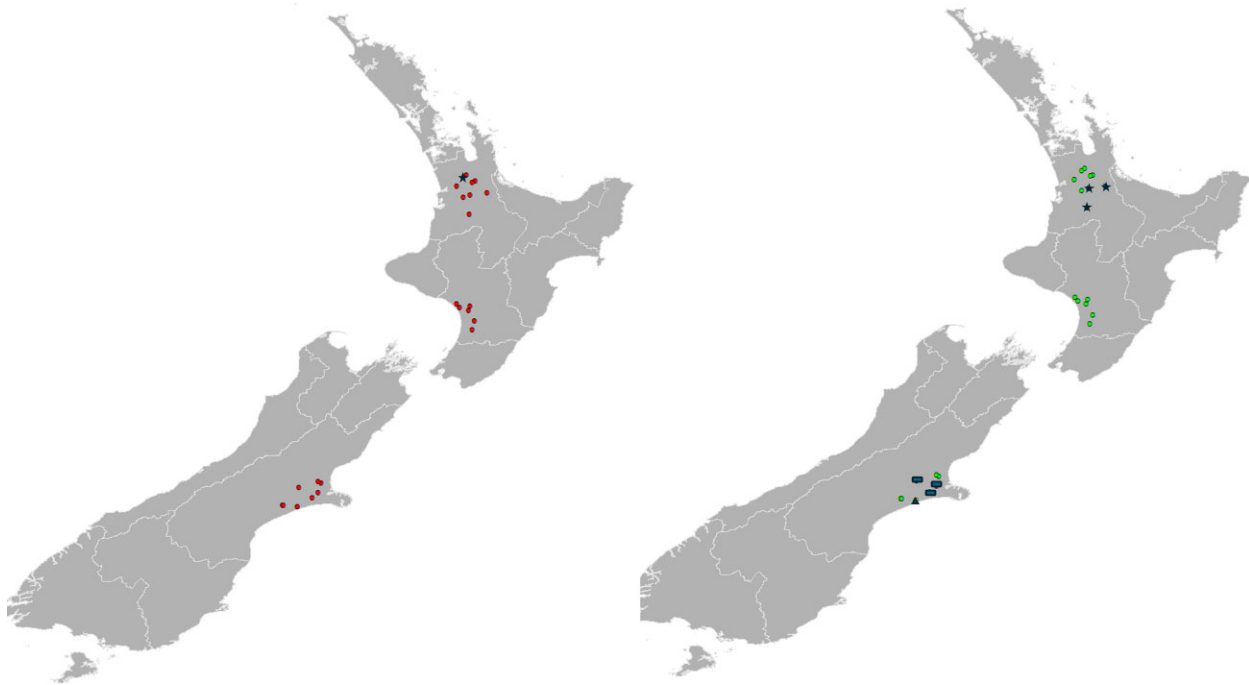
**Figure 4.** Bayesian tree inferred of *Pratylenchus* sequences COX1 of mtDNA under GTR + G model. The posterior probabilities of >50% are given in appropriate clades. Newly obtained sequences from New Zealand maize fields are indicated with arrows.

tified and confirmed through molecular and morphological analyses.

All these identified species are also reported in maize fields in different countries such as the USA, Australia, China, and the UK (Beane 1985, Thompson et al. 2008, Thompson et al. 2010, Simon et al. 2018, Xia et al. 2021, Simon et al. 2023, Thapa et al. 2023). Reported *Pratylenchus* species are polyphagous and can infect a range of other crops such as cereals, fruits, vegetables, forage crops, industrial crops, cot-

ton, coffee, potatoes, and ornamental plants, as well as weed species (Castillo and Vovlas 2007, Stirling 2023). In this study, *P. neglectus* and *P. crenatus* species were observed to be distributed within the New Zealand maize fields studied, and their abundance was also higher above 1000 kg<sup>-1</sup> of soil in many locations.

Both nematode species, *P. neglectus* and *P. crenatus* were identified as potential pathogens and were associated with reduced growth in cereal crops, especially in maize and wheat



**Figure 5.** Prevalence of *Pratylenchus* species in sampled maize fields of New Zealand (A) circles indicate the *P. neglectus* and *P. crenatus* prevalence; (B) star indicate *P. penetrans*, rectangles indicate *P. thornei*, and triangles indicate *P. pratensis*. In (A) star; (B) circles indicate the species that did not prevail.

(Castillo and Vovlas 2007, Simon *et al.* 2023). The New Zealand crop production sector is potentially at risk with PPN. Particularly *Pratylenchus* species reported in this study since they can infest multiple hosts (Stirling 2023). For instance, *P. penetrans* is associated with <400 different plant species (Ozbayrak *et al.* 2019). *Pratylenchus thornei* was reported in many countries as a significant pathogen to cereals, especially in wheat; for example, in Australia it is causing up to 85% yield losses in cereals (Knight 1996, Nicol *et al.* 1999). Additionally, *P. thornei* was reported in Canterbury wheat fields with a higher abundance (above 2000 kg<sup>-1</sup> of soil) in New Zealand (Thiellier and Kularathna 2023), which is the threshold in Australian wheat (Thompson *et al.* 2010).

## Conclusions

In conclusion, the findings of the study confirm that the *Pratylenchus* species associated with New Zealand maize are *P. neglectus*, *P. crenatus*, *P. thornei*, *P. penetrans*, and *P. pratensis*. The species distribution of *P. crenatus* and *P. neglectus* as the most prevalent species, along with localized distributions of *P. thornei*, *P. pratensis*, and *P. penetrans*, suggests potential regional variations in nematode populations, emphasizing the need for tailored management approaches based on local conditions.

## Acknowledgments

The authors express their gratitude to Sandy Hammond for assistance with sample collection and Merrick Norma for the sequencing work. We also thank the New Zealand maize growers who generously allowed sampling on their land and

the team at Pioneer Agricultural Company for their support during the process.

## Author contributions

Nagarathnam Thiruchelvan (Conceptualization [lead], Data curation [lead], Formal analysis [lead], Investigation [lead], Methodology [lead], Software [lead], Validation [lead], Visualization [lead], Writing – original draft [lead], Writing – review & editing [supporting]), Manjula Kularathna (Conceptualization [lead], Formal analysis [supporting], Funding acquisition [lead], Investigation [supporting], Methodology [supporting], Project administration [lead], Resources [lead], Supervision [lead], Writing – review & editing [lead]), Romy Moukarzel (Conceptualization [supporting], Formal analysis [supporting], Methodology [supporting], Project administration [supporting], Resources [supporting], Supervision [supporting], Visualization [supporting], Writing – review & editing [lead]), Seona Casonato (Conceptualization [supporting], Formal analysis [supporting], Methodology [supporting], Supervision [supporting], Writing – review & editing [supporting]), and Leo M. Condrón (Conceptualization [supporting], Supervision [supporting], Writing – review & editing [supporting])

## Supplementary data

Supplementary data is available at *LAMBIO Journal* online.

*Conflict of interest:* Romy Moukarzel is on the editorial board of *Letters in Applied Microbiology*. She was not involved in the review or editorial process for this paper, on which she is listed as an author.

No conflict of interest was declared from other authors.



## Funding

This work was supported by a PhD scholarship under the AHEAD operation [Round 03–2020, grant number AHEAD/Ph.D./R3/Agri/463] and by research funds from Lincoln University, New Zealand [grant number 3601/AGLS/45401/1145841].

## Data availability

Data can be obtained from the corresponding author.

## References

- Beane J. Vertical distribution of *Pratylenchus neglectus*, *P. crenatus* and *Tylenchorynchus dubius* associated with maize roots and the effect of aldicarb residues. *Ann Appl Biol* 1985;106:499–503. <https://doi.org/10.1111/j.1744-7348.1985.tb03141.x>
- Blok VC, Powers TO. Biochemical and molecular identification. In: Perry RN, Moens M, Starr JL (eds), *Root-knot Nematodes*. Wallingford: CABI Publishing, 2009, 98–118.
- Bogale M, Baniya A, DiGennaro P. Nematode identification techniques and recent advances. *Plants* 2020;9:1260.
- Bogale M, Tadesse B, Nuaima RH *et al.* Morphometric and molecular diversity among seven European isolates of *Pratylenchus penetrans*. *Plants* 2021;10:674. <https://doi.org/10.3390/plants10040674>
- Bowles J, Blair D, McManus DP. Genetic variants within the genus *Echinococcus* identified by mitochondrial DNA sequencing. *Mol Biochem Parasitol* 1992;54:165–73. [https://doi.org/10.1016/0166-6851\(92\)90109-W](https://doi.org/10.1016/0166-6851(92)90109-W)
- Castillo P, Vovlas N. *Pratylenchus* (Nematoda:Pratylenchidae): Diagnosis, Biology, Pathogenicity and Management. Leiden: Brill, 2007.
- Chowdhury IA, Yan G, Friskop A. Occurrence of vermiform plant-parasitic nematodes in North Dakota corn fields and impact of environmental and soil factors. *Can J Plant Pathol* 2020;42:429–44. <https://doi.org/10.1080/07060661.2019.1674384>
- Chowdhury IA, Yan G, Kandel H *et al.* Population development of the root-lesion nematode *Pratylenchus dakotaensis* on soybean cultivars. *Plant Dis* 2022;106:2117–26. <https://doi.org/10.1094/PDIS-11-21-2444-RE>
- Cobb NA. A new parasitic nema found infesting cotton and potatoes. *J Agric Res* 1917;11:27–33.
- Darriba D, Taboada GL, Doallo R *et al.* jModelTest 2: more models, new heuristics and parallel computing. *Nat Methods* 2012;9:772. <https://doi.org/10.1038/nmeth.2109>
- De Ley IT, De Ley P, Vierstraete A *et al.* Phylogenetic analyses of *Meloidogyne* small subunit rDNA. *J Nematol* 2002;34:319–27.
- De Man JG. Die einheimischen, frei in der reinen Erde und im süßen Wasser lebenden Nematoden. Vorläufiger Bericht und descriptivsystematischer theil. *Tijdschrift der Nederlandsche Dierkundige Vereeniging* 1880;5:1–104.
- Derycke S, Vanaverbeke J, Rigaux A *et al.* Exploring the use of cytochrome oxidase c subunit 1 (COI) for DNA barcoding of free-living marine nematodes. *PLoS One* 2010;5:e13716. <https://doi.org/10.1371/journal.pone.0013716>
- Divsalar N, Shokoohi E, Hoseinipour A *et al.* Molecular and morphological variation of the root-lesion nematode *Pratylenchus neglectus*. *Biologia* 2018;74:257–67. <https://doi.org/10.2478/s11756-018-00165-z>
- Fayazi F, Farokhi-Nejd R, Ahmadi A *et al.* Molecular and morphometric identification of *P. thornei* and *P. neglectus* in southwest of Iran. *J Plant Pathol Microbiol* 2012;3:1000123. <https://doi.org/10.4172/2157-7471.1000123>
- Filipjev IN, Schuurmans Stekhoven JH. *A Manual of Agricultural Helminthology*. Leiden: Brill, 1941.
- Filipjev IN. On the classification of the Tylenchinae new order (Nematoda:Phasmidia). *Proc Helminthol Soc Wash* 1936;3:80–82.
- Fortuner R. A new description of the process of identification of plant-parasitic nematode genera. In: Fortuner R (ed.), *Nematode Identification and Expert System Technology*. Boston, MA: Springer US, 1988, 35–44.
- Gil D, Cardoso JMS, Abrantes I *et al.* *Pratylenchus penetrans* parasitizing potato crops: morphometric and genetic variability of Portuguese isolates. *Plants* 2021;10:603. <https://doi.org/10.3390/plants10030603>
- Handoo ZA, Golden AM. A key and diagnostic compendium to the species of the genus *Pratylenchus* Filipjev, 1936 (lesion nematodes). *J Nematol* 1989;21:202–18.
- Handoo ZA, Yan G, Kantor MR *et al.* Morphological and molecular characterization of *Pratylenchus dakotaensis* n. sp. (Nematoda:Pratylenchidae), a new root-lesion nematode species on soybean in North Dakota, USA. *Plants* 2021;10:168. <https://doi.org/10.3390/plants10010168>
- Holterman M, Karssen G, van den Elsen S *et al.* Small subunit rDNA-based phylogeny of plant-parasitic nematodes and the evolution of plant feeding. *Phytopathology* 2009;99:227–35. <https://doi.org/10.1094/PHYTO-99-3-0227>
- Huang D, Yan G. Specific detection of the root-lesion nematode *Pratylenchus scribneri* using conventional and real-time PCR. *Plant Dis* 2017;101:359–65. <https://doi.org/10.1094/PDIS-07-16-1013-RE>
- Janssen T, Karssen G, Couvreur M *et al.* The pitfalls of molecular species identification : a case study within the genus *Pratylenchus* (Nematoda:Pratylenchidae). *Nematology* 2017a;19:1179–99. <https://doi.org/10.1163/15685411-00003117>
- Janssen T, Karssen G, Orlando V *et al.* Molecular characterization and species delimiting of plant-parasitic nematodes of the genus *Pratylenchus* from the penetrans group (Nematoda:Pratylenchidae). *Mol Phylogenet Evol* 2017b;117:30–48. <https://doi.org/10.1016/j.ympev.2017.07.027>
- Jenkins W. A rapid centrifugal-flotation technique for separating nematodes from soil. *Plant Dis Rep* 1964;48:692.
- Jones JT, Haegeman A, Danchin EGJ *et al.* Top 10 plant-parasitic nematodes in molecular plant pathology. *Mol Plant Pathol* 2013;14:946–61. <https://doi.org/10.1111/mpp.12057>
- Katoh K, Standley DM. MAFFT multiple sequence alignment software version 7: improvements in performance and usability. *Mol Biol Evol* 2013;30:772–80. <https://doi.org/10.1093/molbev/mst010>
- Knight KW. Plant parasitic nematodes in New Zealand cereals. *NZ Plant Protection* 1996;49:318. [https://nzpps.org/\\_journal/index.php/pnzppc/article/view/11471](https://nzpps.org/_journal/index.php/pnzppc/article/view/11471)
- Kularathna MT, Overstreet C, McGawley EC *et al.* Pathogenicity and reproduction of isolates of reniform nematode, *Rotylenchulus reniformis*, from Louisiana on soybean. *Nematropica* 2019;49:31–41.
- Kumari S. Characterization of *Pratylenchus crenatus* and *P. neglectus* (Nematoda:Pratylenchidae) associated with wheat crop. *Helminthologia* 2015;52:280–6. <https://doi.org/10.1515/helmin-2015-0043>
- Loof PAA. Taxonomic studies on the genus *Pratylenchus* (Nematoda). *Tijdschrift Voor Plantenziekten* 1960;66:29–90.
- Mai WF, Mullin PG, Lyon HH *et al.* *Plant-parasitic Nematodes-A Pictorial Key to Genera*. Ithaca NY: Cornell University Press, 1996.
- Movahedifar E, Azimi S. New morphological observations on *Pratylenchus thornei* Sher & Allen, 1953 (Nematoda Pratylenchidae) based on the population from Iran. *J Zool* 2020;103:89–101.
- Nemaplex. Nematode morphometric parameters. USA: university of California Davis. 2019. <https://nemaplex.ucdavis.edu/Methods>. (23 January 2023, date last accessed).
- Nguyen TD, Le TML, Nguyen HT *et al.* Morphological and molecular characteristics of *Pratylenchus haiduongensis* sp. n., a new species of root-lesion nematodes associated with carrot in Vietnam. *J Nematol* 2017;49:276–85.
- Nguyen TD, Nguyen HT, Le TML *et al.* First report of *Pratylenchus penetrans* (Nematoda:Pratylenchidae) associated with artichokes in Vietnam. *J Nematol* 2023;55:20230060. <https://doi.org/10.2478/jofnem-2023-0060>

- Nicol JM, Davies KA, Hancock TW *et al.* Yield loss caused by *pratylenchus thornei* on wheat in south Australia. *J Nematol* 1999;31:367–76.
- Ozbayrak M, Todd T, Harris T *et al.* A COI DNA barcoding survey of species in the Great Plains Region of North America. *J Nematol* 2019;51:1–21. <https://doi.org/10.21307/jofnem-2019-081>
- Posada D. jModelTest: phylogenetic model averaging. *Mol Biol Evol* 2008;25:1253–6. <https://doi.org/10.1093/molbev/msn083>
- Powers T, Harris T, Higgins R *et al.* MOTUs, morphology, and biodiversity estimation: A case study using nematodes of the suborder Criconeematina and a conserved 18S DNA barcode. *J Nematol* 2011;43:35–48.
- Rensch B. *Aphelenchus neglectus* sp. n., eine neue parasitare Nematodenart. *Zool Anz* 1924;59:277–80.
- Riga E, Porter LD, Mojtahedi H *et al.* *Pratylenchus neglectus*, *P. thornei*, and *Paratylenchus hamatus* nematodes causing yield reduction to dryland peas and lentils in Idaho. *Plant Dis* 2008;92:979. <https://doi.org/10.1094/PDIS-92-6-0979B>
- Roman J, Hirschmann H. Morphology and morphometrics of six species of *Pratylenchus*. *J Nematol* 1969;1:363–86.
- Ronquist F, Teslenko M, van der Mark P *et al.* MrBayes 3.2: efficient bayesian phylogenetic inference and model choice across a large model space. *Syst Biol* 2012;61:539–42. <https://doi.org/10.1093/sysbio/sys029>
- Sher SA, Allen MW. *Revision of the genus Pratylenchus (Nematoda:Tylenchidae)*. University of California Publications in Zoology. 57, Oakland, California: University of California Press, 1953, 441–70.
- Simon ACM, Lopez-Nicora HD, Niblack TL *et al.* Cropping practices and soil properties associated with plant-parasitic nematodes in corn fields in Ohio. *Plant Dis* 2018;102:2519–30. <https://doi.org/10.1094/PDIS-03-18-0471-RE>
- Simon ACM, Niblack TL, Richer EA *et al.* Sampling depth and crop growth stage affect estimates of the population density of lesion nematodes (*Pratylenchus* spp.) in corn fields in Ohio. *Plant Dis* 2023;107:46–59. <https://doi.org/10.1094/PDIS-02-22-0403-RE>
- Singh PR, Nyiragatare A, Janssen T *et al.* Morphological and molecular characterisation of *Pratylenchus rwandae* n. sp. (Tylenchida:Pratylenchidae) associated with maize in Rwanda. *Nematology* 2018;20:781–94. <https://doi.org/10.1163/15685411-00003175>
- Stirling GR. Plant and soil nematodes. 2023. <https://www.appsnet.org/nematodes/>. (17 February 2024, date last accessed).
- Subbotin S, Roubtsova T, Bostock R *et al.* DNA barcoding, phylogeny and phylogeography of the cyst nematode species of the Schachtii group from the genus *Heterodera* (Tylenchida:Heteroderidae). *Nematology* 2023;26:71–97. <https://doi.org/10.1163/15685411-bja10292>
- Subbotin SA, Ragsdale EJ, Mullens T *et al.* A phylogenetic framework for root lesion nematodes of the genus *Pratylenchus* (Nematoda): evidence from 18S and D2–D3 expansion segments of 28S ribosomal RNA genes and morphological characters. *Mol Phylogenet Evol* 2008;48:491–505. <https://doi.org/10.1016/j.ympev.2008.04.028>
- Subbotin SA, Sturhan D, Chizhov VN *et al.* Phylogenetic analysis of Tylenchida Thorne, 1949 as inferred from D2 and D3 expansion fragments of the 28S rRNA gene sequences. *Nematology* 2006;8:455–74. <https://doi.org/10.1163/156854106778493420>
- Subbotin SA, Vierstraete A, De Ley P *et al.* Phylogenetic relationships within the cyst-forming nematodes (Nematoda, Heteroderidae) based on analysis of sequences from the ITS regions of ribosomal DNA. *Mol Phylogenet Evol* 2001;21:1–16. <https://doi.org/10.1006/mpev.2001.0998>
- Thapa S, Darling E, Cole E *et al.* Distribution of plant-parasitic nematodes in Michigan corn fields. *J Nematol* 2023;55:1–13. <https://doi.org/10.2478/jofnem-2023-0015>
- Thiellier MJ, Kularathna M. Evaluating the densities and distribution of root-lesion nematodes (*Pratylenchus* spp.) in wheat grown in Canterbury, New Zealand. *NZ Plant Prot* 2023;76:62–69. <https://doi.org/10.30843/nzpp.2023.76.11768>
- Thiruchelvan N, Seona C, Leo C *et al.* Plant parasitic nematodes associated with maize (*Zea mays* L.) in New Zealand. In: *New Zealand Plant Protection Society Conference (NZPPS)*. Sir Howard Morrison Centre, Rotorua, New Zealand: NZPPS, 2023,16.
- Thompson AL, Smiley RW, Paulitz TC *et al.* Identification of resistance to *Pratylenchus neglectus* and *Pratylenchus thornei* in Iranian landrace accessions of wheat. *Crop Sci* 2016;56:654–72. <https://doi.org/10.2135/cropsci2015.07.0438>
- Thompson JP, Clewett TG, Sheedy JG *et al.* Occurrence of root-lesion nematodes (*Pratylenchus thornei* and *P. neglectus*) and stunt nematode (*Merlinius brevidens*) in the northern grain region of Australia. *Australasian Plant Pathol* 2010;39:254–64. <https://doi.org/10.1071/AP09094>
- Thompson JP, Kirsty O, Tim C *et al.* *Root-lesion Nematodes, Management of Root-lesion Nematodes in the northern Grain Region*. Queensland: Australia Leslie Research Centre, 2009.
- Thompson JP, Owen KJ, Stirling GR *et al.* Root-lesion nematodes (*Pratylenchus thornei* and *P. neglectus*): a review of recent progress in managing a significant pest of grain crops in northern Australia. *Australasian Plant Pathol* 2008;37:235–42. <https://doi.org/10.1071/AP08021>
- Xia YH, Liu YK, Hao PH *et al.* Molecular and morphological characterization of the root-lesion nematode, on corn from Henan Province of China. *Helminthologia* 2021;58:385–93. <https://doi.org/10.2478/helm-2021-0044>
- Yan GP, Smiley RW, Okubara PA *et al.* Detection and discrimination of *Pratylenchus neglectus* and *P. thornei* in DNA extracts from soil. *Plant Dis* 2008;92:1480–7. <https://doi.org/10.1094/PDIS-92-11-1480>